

FEATURES AND SPECIFICATIONS

Features and Benefits

- Stacking height: 5.0 to 8.0 and 10mm
- Sizes 20 to 240 circuits
- Housing lock on 20 to 70 circuits
- Anti-flux design
- Metal solder tabs provide PCB hold down and strain relief for SMT tails
- Polarizing pegs assist placement

Reference Information

Packaging: Tube and embossed tape

Mates With: 53475 (H=5.0mm)

53467 (H=6.0mm)

53481 (H=7.0mm)

53551 (H=8.0mm)

53553 (H=10.0mm)

Designed In: Millimeters

Electrical

Voltage: 100V

Current: 0.5A

Contact Resistance: 40mΩ max. (H=5.0 to 7.0mm)
50mΩ max. (H=8.0, 10.0mm)

Dielectric Withstanding Voltage: 250V

Insulation Resistance: 1000 MΩ min.

Physical

Housing: White glass-filled LCP, UL 94V-0

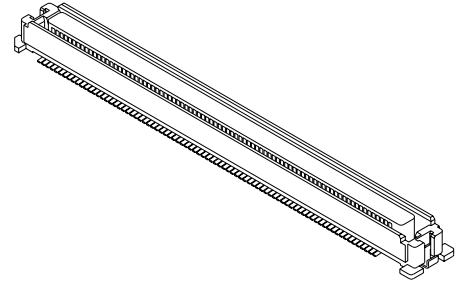
Contact: Copper Alloy

Plating: Gold over Nickel

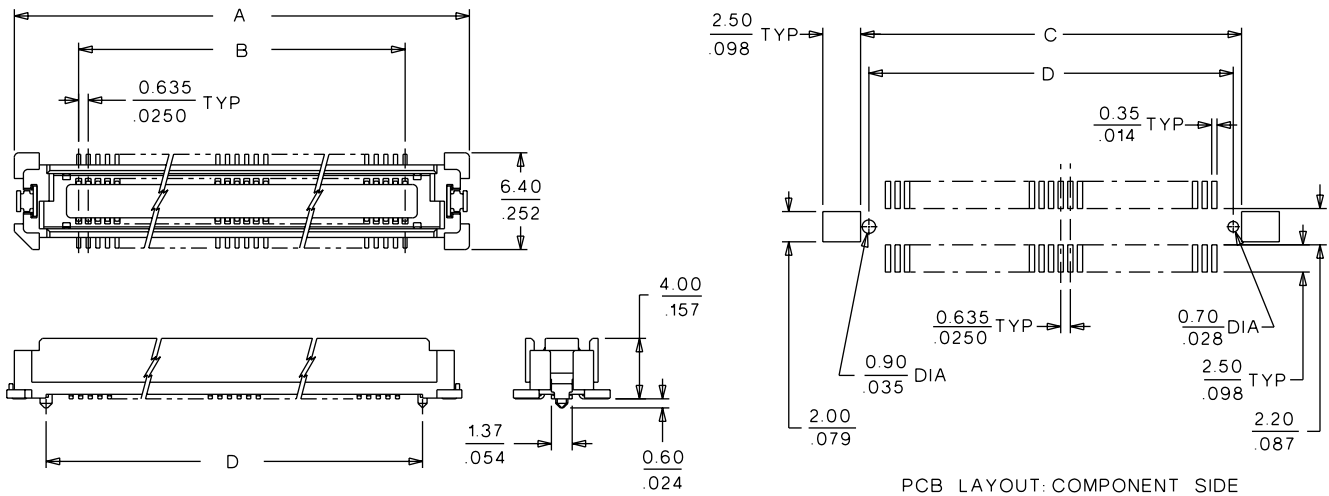
Temperature: -55 to +85°C

molex® 0.635mm (.025") Pitch Board-to-Board Receptacle

52760/52885 SMT, Dual Row Vertical Stacking



Micro Connectors



PCB LAYOUT: COMPONENT SIDE

Note: 52760 shown

ORDERING INFORMATION AND DIMENSIONS

Circuits	Order No.			Dimension			
	Tube	Tube with Cover	Embossed Tape with Cover	A	B	C	D
20	52760-0209		52885-0204	14.22 (.559)	5.715 (.220)	10.62 (.418)	9.02 (.355)
30	52760-0309		52885-0304	17.40 (.685)	8.890 (.340)	13.80 (.543)	12.20 (.480)
40	52760-0409			20.57 (.809)	12.065 (.470)	16.97 (.668)	15.37 (.605)
50	52760-0509	52885-0505	52885-0504	23.75 (.935)	15.240 (.590)	20.15 (.793)	18.55 (.730)
60	52760-0609	52885-0605	52885-0604	26.92 (1.059)	18.415 (.720)	23.32 (.918)	21.72 (.855)
68	52760-0689			29.46 (1.159)	20.955 (.820)	25.86 (1.018)	24.26 (.955)
70	52760-0709	52885-0705	52885-0704	30.10 (1.185)	21.590 (.840)	26.50 (1.043)	24.90 (.980)
80	52760-0809		52885-0804	33.27 (1.309)	24.765 (.970)	29.67 (1.168)	28.07 (1.105)
90	52760-0909	52885-0905	52885-0904	36.45 (1.435)	27.940 (1.090)	32.85 (1.293)	31.25 (1.230)
100	52760-1009	52885-1005	52885-1004	39.62 (1.559)	31.115 (1.220)	36.02 (1.418)	34.42 (1.355)
120	52760-1209	52885-1205		45.97 (1.809)	37.465 (1.470)	42.37 (1.668)	40.77 (1.605)
140	52760-1409	52885-1405		52.32 (2.059)	43.815 (1.720)	48.72 (1.918)	47.12 (1.855)
160	52760-1609	52885-1605		58.67 (2.309)	50.165 (1.970)	55.07 (2.168)	53.47 (2.105)
180	52760-1809			65.02 (2.559)	56.515 (2.220)	61.42 (2.418)	59.82 (2.355)
200	52760-2009			71.37 (2.809)	62.865 (2.470)	67.77 (2.668)	66.17 (2.605)
240	52760-2409			84.07 (3.309)	75.565 (2.970)	80.47 (3.168)	78.87 (3.105)

Note: Use only one connector per daughterboard in order to insure proper mating alignment

Note: Contact Inside Sales for embossed tape specifications