

QuickStart Instructions

WEC 7-Kit

phyCORE[®]-AM335x

Using Microsoft Visual Studio 2008
Software Development Toolchain

Note: The PHYTEC WinCE-phyCORE-AM335x includes the electronic version of the English phyCORE[®]-AM335x Hardware Manual

A product of a PHYTEC Technology Holding company

In this manual copyrighted products are not explicitly indicated. The absence of the trademark (™) and copyright (©) symbols does not imply that a product is not protected. Additionally, registered patents and trademarks are similarly not expressly indicated in this manual.

The information in this document has been carefully checked and is believed to be entirely reliable. However, PHYTEC Messtechnik GmbH assumes no responsibility for any inaccuracies. PHYTEC Messtechnik GmbH neither gives any guarantee nor accepts any liability whatsoever for consequential damages resulting from the use of this manual or its associated product. PHYTEC Messtechnik GmbH reserves the right to alter the information contained herein without prior notification and accepts no responsibility for any damages which might result.






Additionally, PHYTEC Messtechnik GmbH offers no guarantee nor accepts any liability for damages arising from the improper usage or improper installation of the hardware or software. PHYTEC Messtechnik GmbH further reserves the right to alter the layout and/or design of the hardware without prior notification and accepts no liability for doing so.

© Copyright 2012 PHYTEC Messtechnik GmbH, 55129 Mainz.

Rights - including those of translation, reprint, broadcast, photomechanical or similar reproduction and storage or processing in computer systems, in whole or in part - are reserved. No reproduction may be made without the explicit written consent from PHYTEC Messtechnik GmbH.

	EUROPE	NORTH AMERICA
Address:	PHYTEC Technologie Holding AG Robert-Koch-Str. 39 55129 Mainz GERMANY	PHYTEC America LLC 203 Parfitt Way SW, Suite G100 Bainbridge Island, WA 98110 USA
Ordering Information:	+49 (800) 0749832 order@phytec.de	1 (800) 278-9913 sales@phytec.com
Technical Support:	+49 (6131) 9221-31 support@phytec.de	1 (800) 278-9913 support@phytec.com
Fax:	+49 (6131) 9221-33	1 (206) 780-9135
Web Site:	http://www.phytec.de	http://www.phytec.com

1st Edition: October 2012

1	Introduction	3	
1.1	Rapid Development Kit Documentation	3	
1.2	Professional Support Packages available	4	
1.3	Overview of this QuickStart Instruction	4	TIME
1.4	Conventions used in this QuickStart.....	5	5 min
1.5	System Requirements	6	
1.6	Microsoft Visual Studio 2008 Development Toolchain	7	
2	Getting Started.....	9	
2.1	Installing Visual Studio 2008.....	9	
2.2	Installing Platform Builder	10	TIME
2.3	Installing WinCE phyCORE-AM335x-Kit software.....	12	4-5 h
2.4	Installing Microsoft Active Sync 4.5.....	15	
2.5	Preparing the phyCORE®-AM335x to interface to a host-PC	16	
2.5.1	Windows 7 / Windows Vista.....	17	
2.5.2	Windows XP	18	
2.6	Downloading Example Code with Active Sync	19	
2.6.1	Windows 7 / Windows Vista.....	19	
2.6.2	Windows XP	20	TIME
2.7	Downloading Example Code with Visual Studio 2008.....	21	30 min
3	Getting More Involved.....	27	
3.1	Creating a New Project	27	
3.2	Create a Button on dialog.....	31	
3.3	Modifying the Source Code	33	TIME
3.4	Building the Project	34	40 min
4	Debugging.....	36	
4.1	Starting the Debugger.....	36	
4.2	Visual Studio 2008 Debug Features.....	38	
4.3	Using the Visual Studio 2008 Debug Features.....	39	
4.4	Changing Target Settings for the "Executable Version"	40	TIME
5	Building an image.....	41	50 min
5.1	Changing an image.....	41	
5.2	Download an image	42	
5.2.1	Configure terminal program on Windows 7 / Vista	42	
5.2.2	Configure Hyper Terminal on Windows XP	43	
5.2.3	Downloading Image	46	
6	Summary	50	
7	How to install Windows Embedded Compact on the phyCORE-AM335x Kit	51	
7.1	SD-Card preparation	51	

7.2	Configuring boot jumper	51
7.3	Configure terminal program.....	52
7.3.1	Windows 7 / Vista.....	52
7.3.2	Windows XP.....	53
7.4	Update Bootloader (XLDR / EBOOT).....	55

1 Introduction



5 min

TIME

This QuickStart provides general information on the PHYTEC phyCORE[®]-AM335x Single Board Computer (SBC). It gives you also an overview of Microsoft's Visual Studio 2008 software development toolchain and instructions on how to run example programs on the phyCORE[®]-AM335x, mounted on the PHYTEC phyCORE[®] Development Board, in conjunction with Visual Studio 2008.

Please refer to the [phyCORE[®]-AM335x Hardware Manual](#) for specific information on such board-level features as [jumper configuration](#), [memory mapping](#) and [pin layout](#). Selecting the links on the electronic version of this document leads to the respective section of the phyCORE[®]-AM335x Hardware Manual.

1.1 Rapid Development Kit Documentation

This "Rapid Development Kit" (RDK) includes the following electronic documentation on the enclosed "PHYTEC WinCE-phyCORE-AM335x-Disc":

- the PHYTEC [phyCORE[®]-AM335x Hardware Manual](#)
- controller [User's Manuals and Data Sheets](#)
- this QuickStart Instructions with general "Rapid Development Kit" description, software installation advice and an example program, enabling quick out-of-the box start-up of the phyCORE[®]-AM335x in conjunction with the Microsoft Visual Studio 2008 software development toolchain

1.2 Professional Support Packages available

This Kit comes with free installation support. If you do have any questions concerning installation and setup, you are welcome to contact our support department.

For more in-depth questions, we offer a variety of custom tailored packages with different support options (e-mail, phone, direct contact to the developer) and different reaction times.

Please contact our sales team to discuss the appropriate support option if professional support beyond installation and setup is important to you.

1.3 Overview of this QuickStart Instruction

This QuickStart Manual gives a general "Rapid Development Kit" description, as well as software installation advice and an example program enabling quick out-of-the box start-up of the phyCORE[®]-AM335x in conjunction with Microsoft's Visual Studio 2008. It is structured as follows:

- 1) The "Getting Started" section uses the example *HelloWorld* to demonstrate the download of user code to the target device using Visual Studio 2008 with ActiveSync.
- 2) The "Getting More Involved" section provides step-by-step instructions on how to configure and build a new WinCE image, modify the example, create and build a new project and generate and download output files to the phyCORE[®]-AM335x using the Microsoft tools.
- 3) The "Debugging" section demonstrates simple debug functions using Visual Studio 2008 debug environment.

In addition to the dedicated data for this Rapid Development Kit, the PHYTEC WinCE Kit disc contains supplemental information on embedded microcontroller design and development.

1.4 Conventions used in this QuickStart

The following is a list of the typographical conventions used in this book:

Italic Used for file and directory names, program and command names, command-line options, menu items, URLs, and other terms that correspond to the terms on your desktop.

Bold Used in examples to show commands or other text that should be typed literally by the user.

Pay special attention to notes set apart from the text with the following icons:



OPTION

At this part you might leave the path of this QuickStart.



CAUTION

This is a warning. It helps you to avoid annoying problems.



TIP

Provides useful supplementary information about the topic.



TIME

At the beginning of each chapter you can find information of the time to pass the following chapter.



SUCCESS

You have successfully passed an important part of this QuickStart manual.



RESOLVE

You can find information to solve problems.

1.5 System Requirements

The use of this "Rapid Development Kit" requires:

- the PHYTEC phyCORE®-AM335x
- the phyCORE® Development Board with the included DB-9 serial cable, USB A/mini-B cable, Ethernet cross-over cable and AC adapter supplying 5 VDC (min. 2 A)
- Windows Embedded Compact 7 (Eval version)
- the PHYTEC WinCE-phyCORE-AM335x-Disc for WEC 7
- an IBM-compatible host-PC (586 or higher running with WindowsXP and at least 10 GB free hard disc space)

For more information and example updates, please refer to the following sources:

PHYTEC

<http://www.phytec.de>
support@phytec.de

1.6 Microsoft Visual Studio 2008 Development Toolchain

Microsoft's Software development tools for the phyCORE-AM335x architecture aid every level of developer from the professional applications engineer to the student just learning about embedded software development.

Visual Studio 2008 is the version of Microsoft's popular IDE that supports also WEC 7. The needed Platform Builder is integrated in Visual Studio 2008. So it is possible to customize the Windows Embedded Compact Image and write user applications with just one tool. Visual Studio 2008 combines project management, source code editing, program debugging, and target programming in a single, powerful environment. This QuickStart provides an overview of the most commonly used VS 2008 features including:

- Project management, device setup, and tool configuration
- Editor facilities for creating, modifying, and correcting programs
- Target debugging
- Building a new image

The VS 2008 editor offers many standard and advanced software editing features like:

- **Automatic completion** of code statements
- **Auto listing** of object members
- Detailed **Syntax Highlighting**. Colors are used in printed output.
- **Automatic indent** and **tab blocks** of code

The Visual Studio 2008 Toolchain is available from your local Microsoft dealer. There is also an evaluation version available which is used in this

QuickStart. You can use it to develop standard WinCE applications, MFC WinCE applications and .NET Applications for WinCE.



If you already have installed another version of Visual Studio 2008, you can use this one. We recommend installing the evaluation version when working with this QuickStart.

2 Getting Started



4-5 h

In this chapter you will install Rapid Development Kit software and prepare the phyCORE[®]-AM335x, mounted on the Development Board, to interface to a host-PC. You will also learn how to download an example application from a host-PC using Visual Studio 2008.

2.1 Installing Visual Studio 2008

To install Visual Studio 2008 on your desktop PC insert the DVD labeled “Visual Studio 2008 Professional Edition” included in this kit in your DVD Rom drive. The setup should launch automatically. If not, open a windows file explorer, go to your DVD drive and start “setup.exe” manually. Visual Studio 2008 needs at least 2 GB free hard disc space to install.

The following screen appears:



Click “Install Visual Studio 2008” and follow the instructions of the setup program.

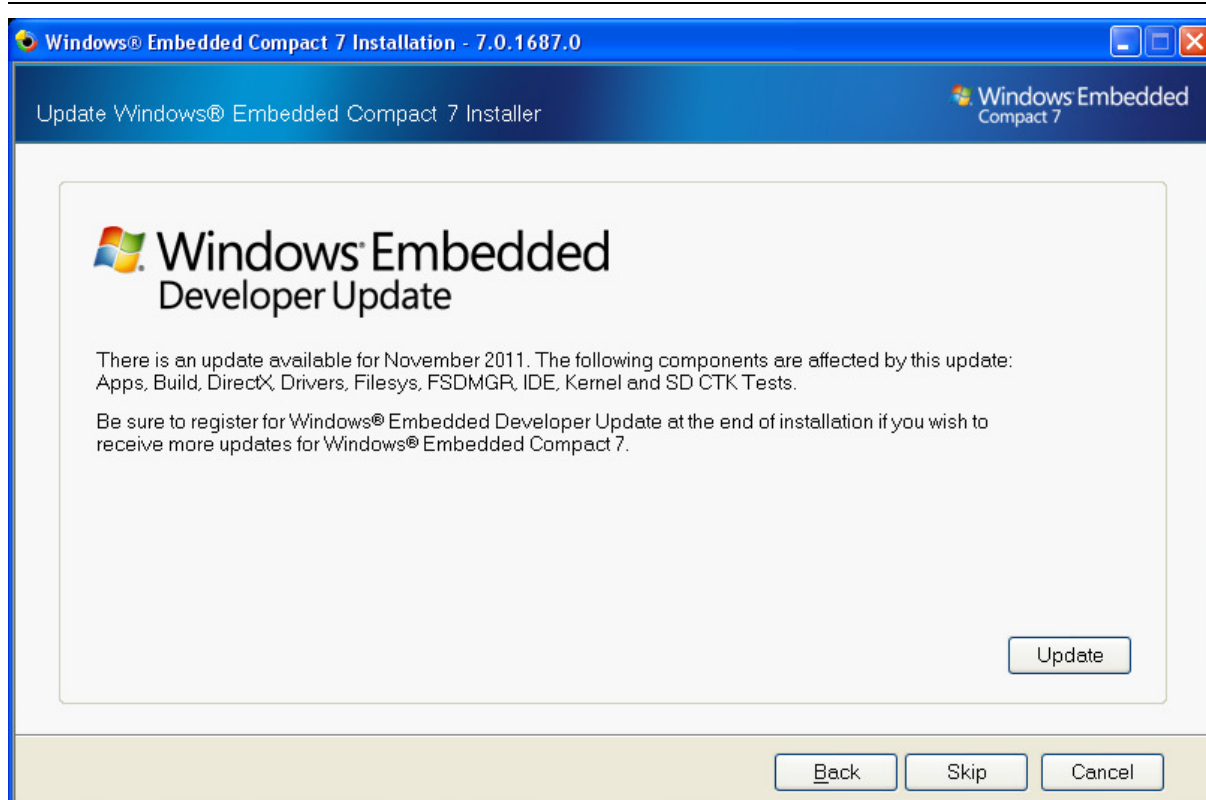
After installation you have to download and install the Visual Studio 2008 Service Pack 1 at:

<http://www.microsoft.com/download/en/details.aspx?id=10986>

2.2 Installing Platform Builder

To install the Platform Builder Plug-in for Visual Studio 2008, please insert the DVD labeled “Windows Embedded Compact 7” in your DVD drive. The setup should start automatically. If not, open a windows file explorer, select your DVD drive and start “WindowsEmbeddedCompact7.exe” manually. On the opening window click “Install” to start further installation steps.

To getting an up-to-date development environment, you have to click “Update” for downloading the newest installation files. If you don’t have internet connection, skip the update process and download it later. It is recommended to download the updates for best environment compatibility.



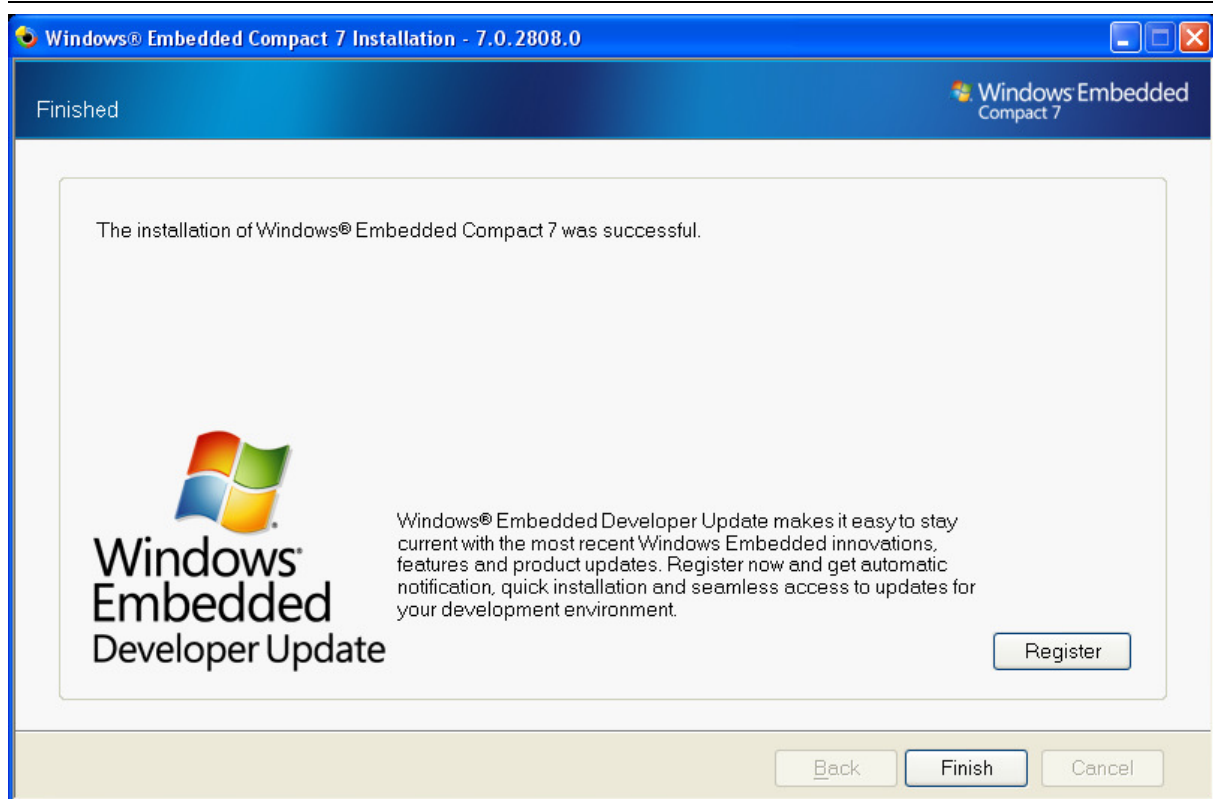
Follow the install instructions and choose “Full install” to get the whole product support.



CAUTION

During the setup you have to enter a product activation key. You will find it on the front of the DVD case.

After complete installation, it is recommended to register for the Windows Embedded Developer Update program to get all necessary updates. Click “Register” for the registration.



2.3 Installing WinCE phyCORE-AM335x-Kit software

In this section you will find a description of the WinCE-phyCORE-AM335x-Kit setup. This setup will install the following tools and programs:

- SDK for phyCORE-AM335x WEC 7.0
- A binary BSP for the phyCORE-AM335x and a project to build a new image
- Example programs for Visual Studio 2008
- Digital version of this QuickStart instruction and the hardware manuals

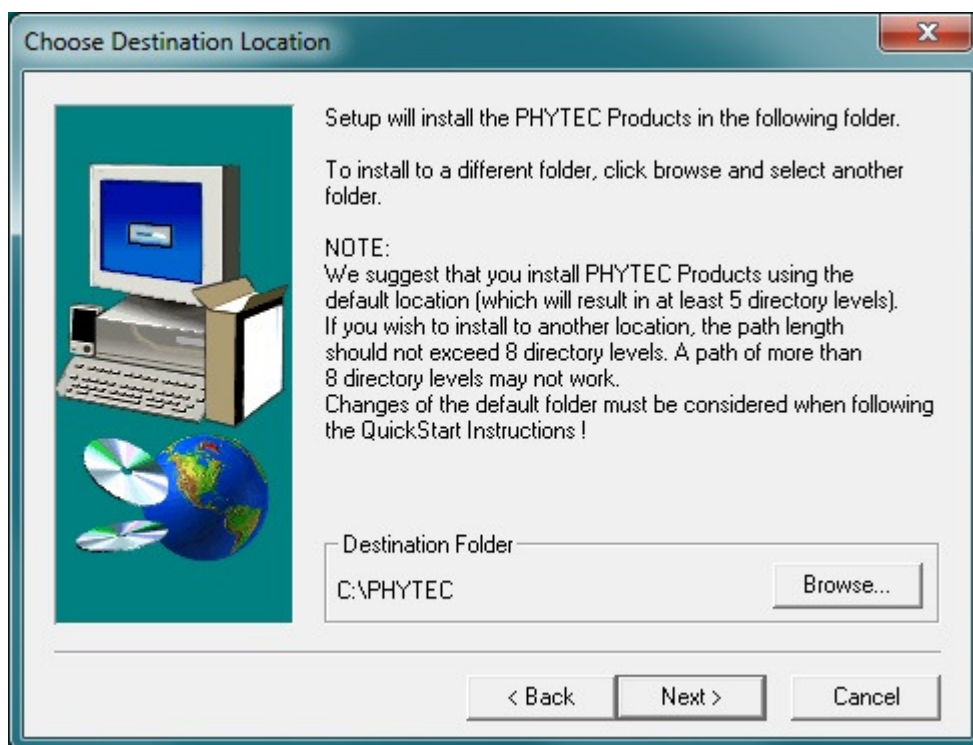
The phyCORE-AM335x SDK for WinCE is needed for writing target-oriented applications. It will integrate in the Visual Studio IDE, offering a new target device for code generation. Also the SDK includes all functionality that is included in the image that runs on the phyCORE-AM335x. Therefore using the SDK allows the compiler to check if all functionality that is needed in the

application will be present in the image. The absence of specific features is therefore recognized at “compile-time” not at “runtime”.

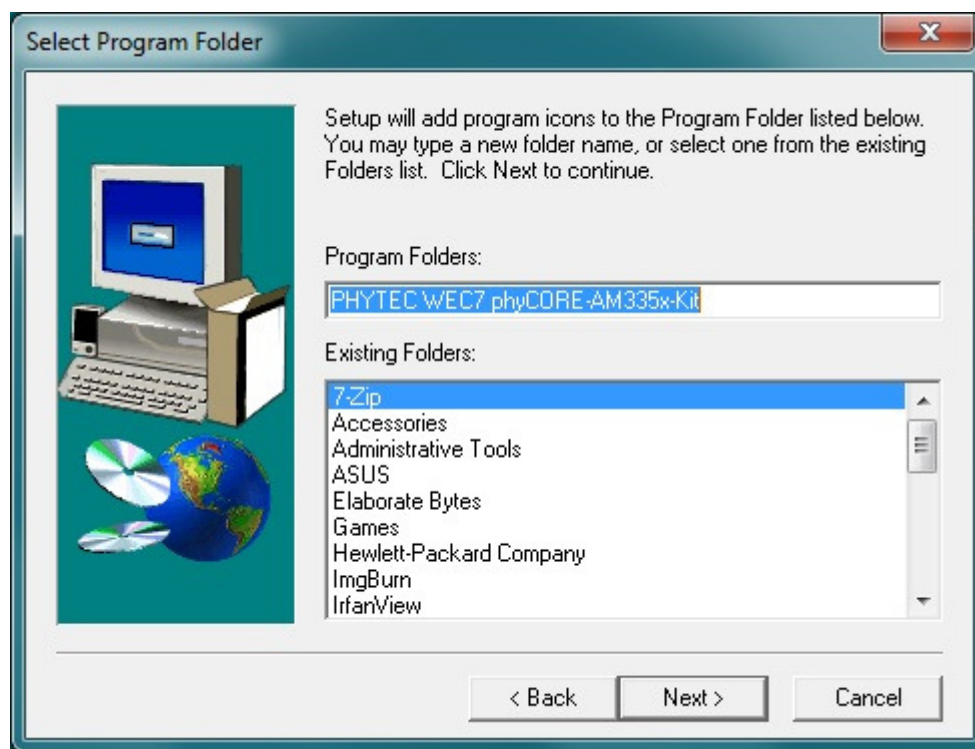


For proper installation of the SDK it is essential to first install Visual Studio 2008 as described in chapter 2.1.

Insert the CD labeled “PHYTEC phyCORE-AM335x” in your CDROM/DVD drive and start *setup.exe*.

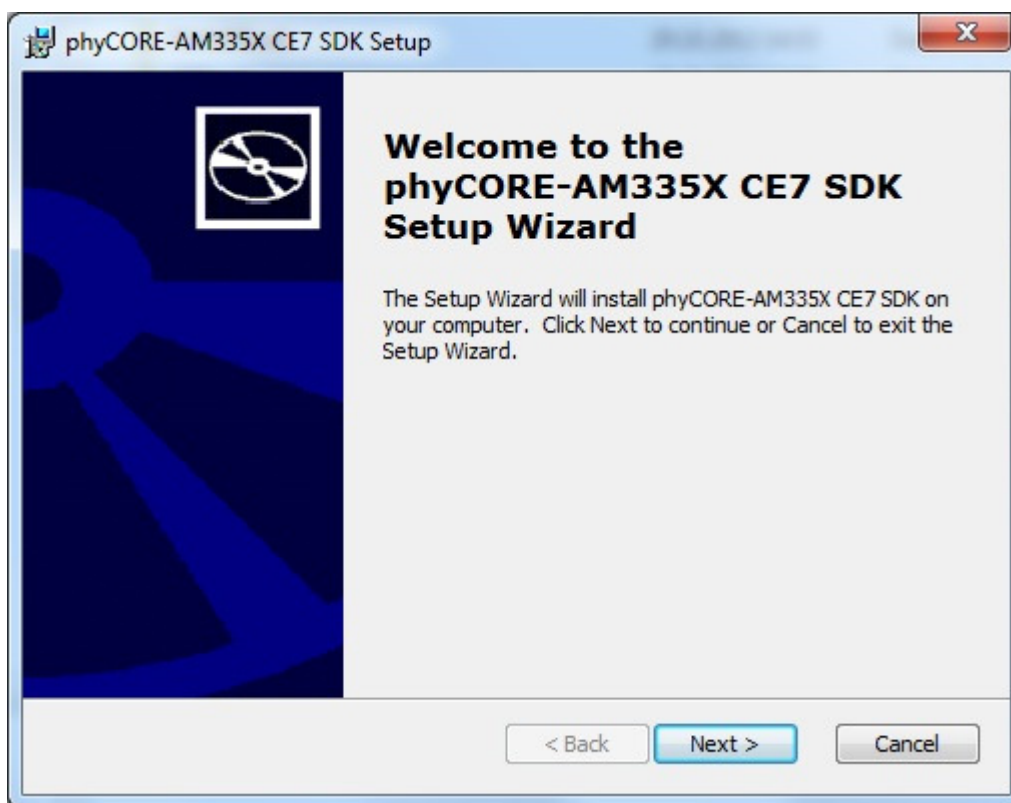


In this dialog you are asked for a destination path for installing the demo software and the manuals. We recommend using the default path for working with this QuickStart.



In the next dialog you can choose a program folder. We recommend using the default program folder for working with this QuickStart.

In the next steps, the BSP for the PHYTEC phyCORE-AM335x will be installed. Please follow the instructions on the screen.



After this the installation of the SDK will be launched. Follow the instructions of the installation program. Choose *complete* when being asked for the amount of files to install.

2.4 Installing Microsoft Active Sync 4.5



If Windows 7 is installed on the PC it is not necessary to install Active Sync. Windows 7 brings his own Mobile Device Center for the connection to the device.

To be able to upload the software you are developing to your phyCORE-AM335x device you need Microsoft Active Sync 4.5. When your PC is connected to your phyCORE-AM335x device via a USB cable this software allows you to create a direct connection to your device.

You can download **Microsoft Active Sync 4.5** from the Microsoft website at <http://www.microsoft.com/windowsmobile/activesync/activesync45.mspx>

To download the software follow the instruction given on the webpage and save the downloaded file to your hard drive. Select the folder you saved the software to and double-click setup.msi.

Click “Next” and in the following dialog click “Install” to start the installation process for Microsoft Active Sync 4.5. This may take a few minutes.



You have successfully installed the software for the WinCE-phyCORE-AM335x-Kit. You can find the programs you will need to develop own applications for the target on your host system. All necessary configurations were done by the setup program.

2.5 Preparing the phyCORE[®]-AM335x to interface to a host-PC

To be able to interface your phyCORE-AM335x with your PC you must first setup the correct network settings on your phyCORE-AM335x. For downloading software to the phyCORE-AM335x with ActiveSync or Windows Mobile Device Center we will use the USB interface in this QuickStart. This chapter explains how to configure WinCE to connect to your host PC.

Connect the AC adapter with the power supply connector (5V) on your board.



The power connector should have 5 VDC inside and outside should be ground.



If Windows Embedded Compact didn't start within 1 minute, you have a kit with linux preinstalled. Please continue with Appendix A “How to install Windows Embedded Compact on the phyCORE-AM335x Kit” and continue here after you have finished this chapter successfully.

When Windows Embedded Compact has loaded it will show a screen to calibrate the touch panel. Click on the cross on the screen to calibrate your touch panel. When calibration is done you will see the WinCE screen.

2.5.1 Windows 7 / Windows Vista

Windows Mobile Device Center (WMDC 6.1) is pre-installed in Windows 7. Connect the USB A/mini-B cable with the USB OTG connector on the target to a free USB port on your host.



The jumper JP12 on the carrier board must be open for a successful USB OTG client connection.



Ensure to use the USB A/mini-B included in this RDK.

Establishing the connection might take a few seconds. Once the connection has been established WMDC will show a screen with status information.



2.5.2 Windows XP

ActiveSync should already be running after the installation in chapter 2.4

Connect the USB A/mini-B cable with the USB OTG connector on the target to a free USB port on your host.

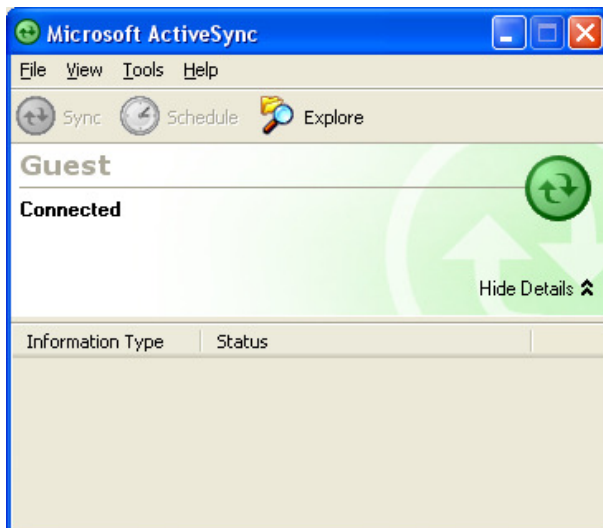


The jumper JP12 on the carrier board must be open for a successful USB OTG client connection.



Ensure to use the USB A/mini-B included in this RDK.

Establishing the connection might take a few seconds. Once the connection has been established Active Sync will show a screen with status information.



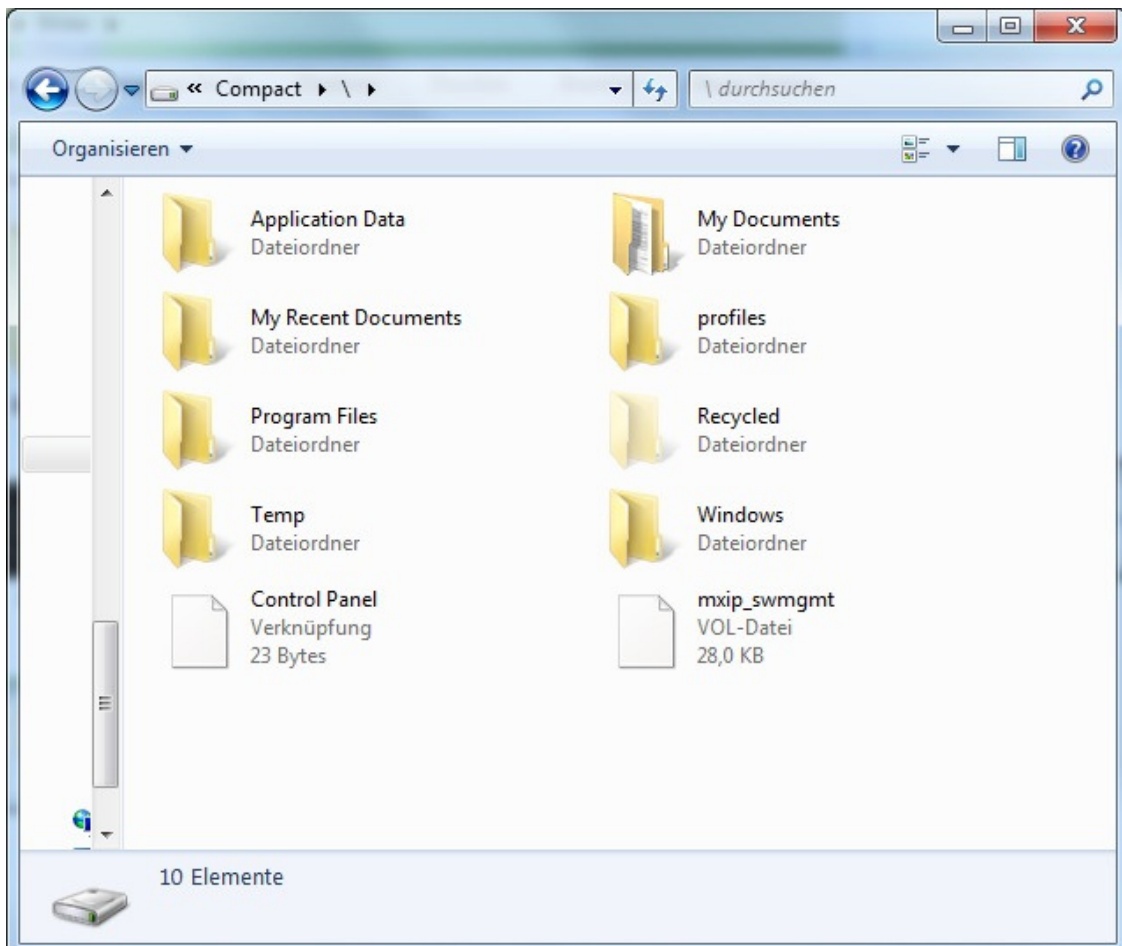
Your PC is now connected to your phyCORE-AM335x device.

2.6 Downloading Example Code with Active Sync

To download the example code provided on the WinCE-phyCORE-AM335x-Disc, you need to have Active Sync or WMDC running on your PC to be able to establish a connection to your phyCORE-AM335x device as described in the previous chapter.

2.6.1 Windows 7 / Windows Vista

Click on “File Management” and “Browse the contents of your device” to open a windows explorer showing up the device file system. Under the volume “/” you will be find all directories.



Open a file manager and navigate to the folder

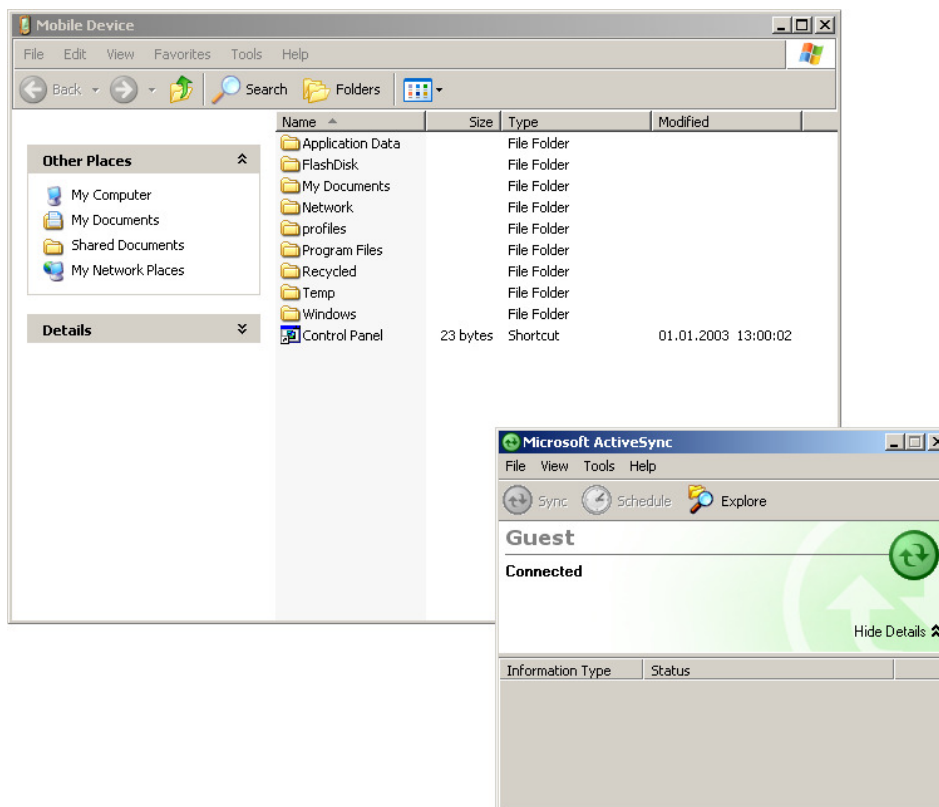
C:\PHYTEC\PCM051_phyCORE-AM335x\WEC7-Kit\QuickStart\Demos
 \Demo\HelloWorld\HelloWorld\phyCORE-AM335x (ARMV4I)\Debug.

Select *HelloWorld.exe* and copy it to the device in the folder *Program Files* using drag and drop.

The program has now been copied to your phyCORE-AM335x device. You will be able to access it by double-clicking the *My Device* icon on your phyCORE-AM335x device. This opens a window that will show you the file structure of your device. You should be able to find *HelloWorld.exe* at the location you copied it to. Double-click it to execute the program. A window will open on your phyCORE-AM335x device that shows a listbox and a button “Print Hello World”. Click on the button for printing *Hello World* in the listbox.

2.6.2 Windows XP

Click *Tools* in the menu bar of Active Sync and select *Explore Device*. An Explorer window called *Mobile Device* will open that will show you the folder structure of the Windows Embedded Compact installation on your phyCORE-AM335x device.



Open a file manager and navigate to the folder
`C:\PHYTEC\PCM051_phyCORE-AM335x\WEC7-Kit\QuickStart\Demos`
`\Demo\HelloWorld\HelloWorld\ phyCORE-AM335x (ARMV4I)\Debug.`

Select *HelloWorld.exe* and copy it to the *Mobile Device* window in the folder *Program Files* using drag and drop. If a question regarding file conversion arises, just confirm with *OK*.

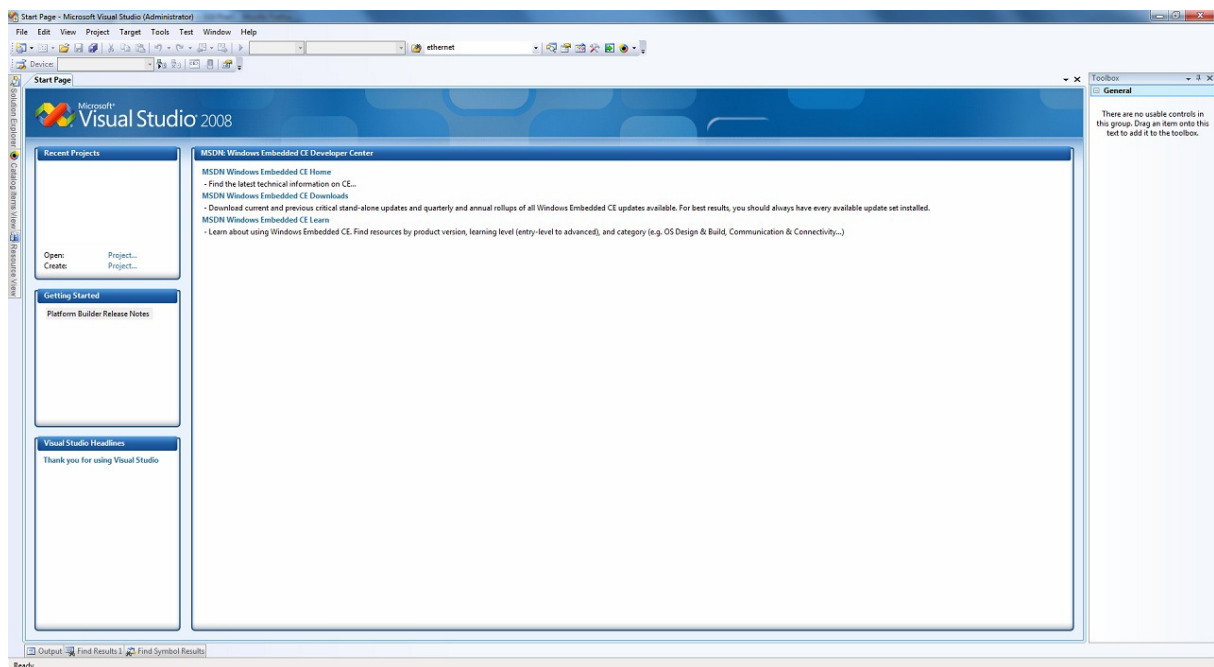
The program has now been copied to your phyCORE-AM335x device. You will be able to access it by double-clicking the *My Device* icon on your phyCORE-AM335x device. This opens a window that will show you the file structure of your device. You should be able to find *HelloWorld.exe* at the location you copied it to. Double-click it to execute the program. A window will open on your phyCORE-AM335x device that will print a *Hello World* message.

2.7 Downloading Example Code with Visual Studio 2008

PHYTEC provides you with example code to learn about downloading code onto your phyCORE-AM335x device. This code has already been copied to your local hard drive by the setup.

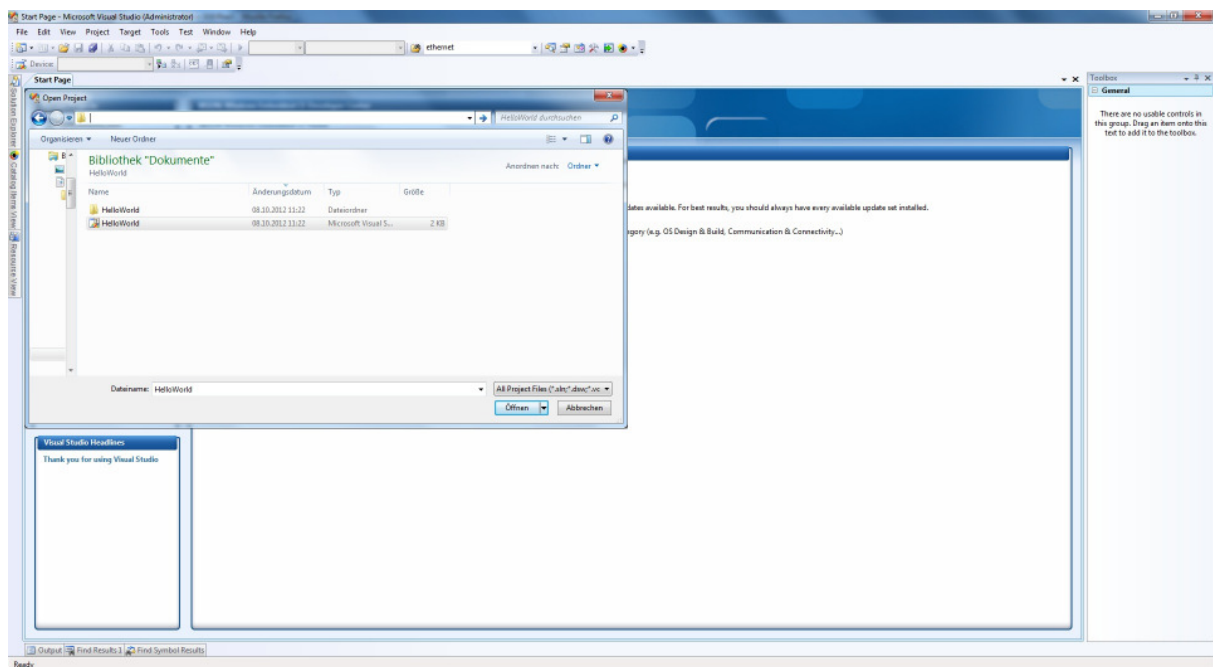
Start the toolchain by selecting *Microsoft Visual Studio 2008* from the programs group: *Start / Programs / Microsoft Visual Studio 2008*.

After starting Visual Studio 2008 the window shown below will appear. Here you can create projects, edit files, configure tools, assemble, link and start the debugger. Close all projects that might be open by selecting *File / Close Solution*.

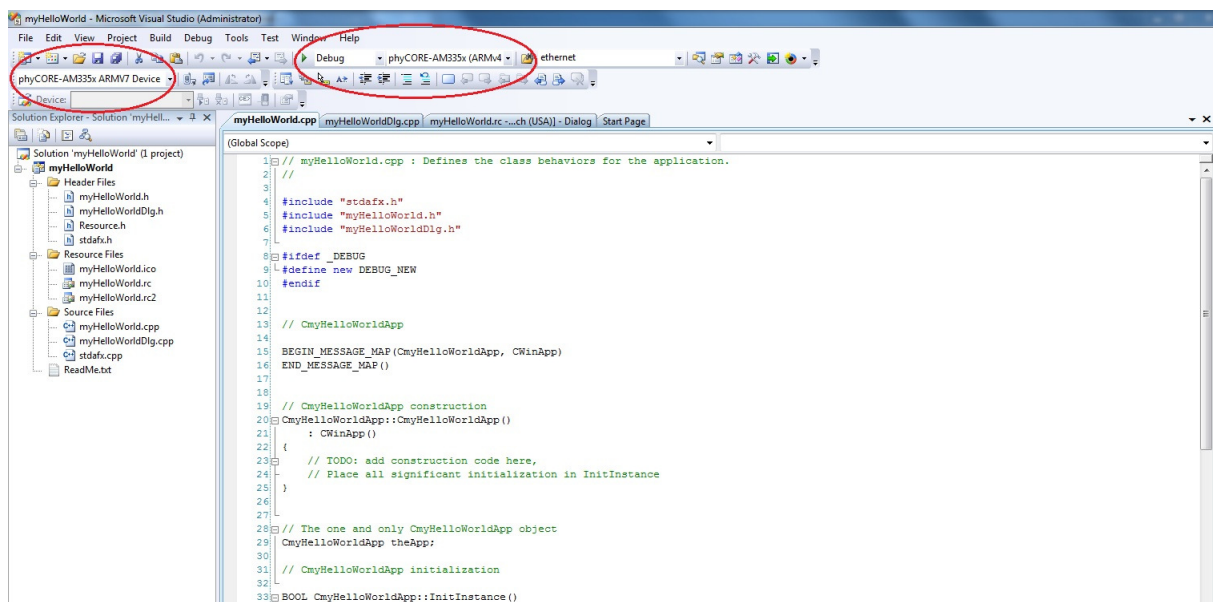


The *HelloWorld* example downloads a program to your device that, when executed, prints the text *Hello World* on the display of your phyCORE[®]-AM335x.

- To open the *HelloWorld* project select *File / Open / Project/Solution...* from the Visual Studio 2008 menu bar.
- Browse to the folder
`C:\PHYTEC\PCM051_phyCORE-AM335x\WEC7-Kit\QuickStart\Demos`
`\Demo\HelloWorld.`
- Select the *HelloWorld* project *HelloWorld*.




- Click *Open*.
- In the **Solution Platform** pull-down menu make sure that the *phyCORE-AM335x (ARMv4I)* configuration is selected. Also make sure that *phyCORE-AM335x ARMV7 Device* is selected in the **Target device** menu.



If these menus are not shown in your Visual Studio IDE, move your mouse to an empty space on the toolbar, press the right mouse button and select from the pop up menu the menus *Target* and *Device*.

Build the Project

- Build the target by either selecting the Build icon  on the build toolbar or in the main menu bar select *Build / Build HelloWorld*.
- If any source file of the project contains any errors, they will be shown in the Output Window - Build tab. Use the editor to correct the error(s) in the source code, save the file and repeat the build.
- If there are no errors, the code can be downloaded to your phyCORE-AM335x device. For this to work you need to have established an Active Sync or Windows Mobile Device Center connection between your PC and your phyCORE-AM335x device as described in section 2.6. When the connection is established select *Build / Deploy HelloWorld* from the main menu bar.
- The individual steps of the download procedure can be viewed in the Output Window - Build tab.
- Wait until the download is complete.

- The newly created application was now deployed on your phyCORE-AM335x device. To start it select *My Device* on the target platform, go to the folder *Program Files / Helloworld* and double tap on “HelloWorld”.
- A window with one button will open on your phyCORE-AM335x device. Click on the button to print the Hello World message on a listbox.
- Click the Close icon in the window to close the application.



You have successfully passed the Getting Started part of this QuickStart. In this chapter you learned how to open a project, build an executable and transfer and run this executable on the target hardware.

3 Getting More Involved



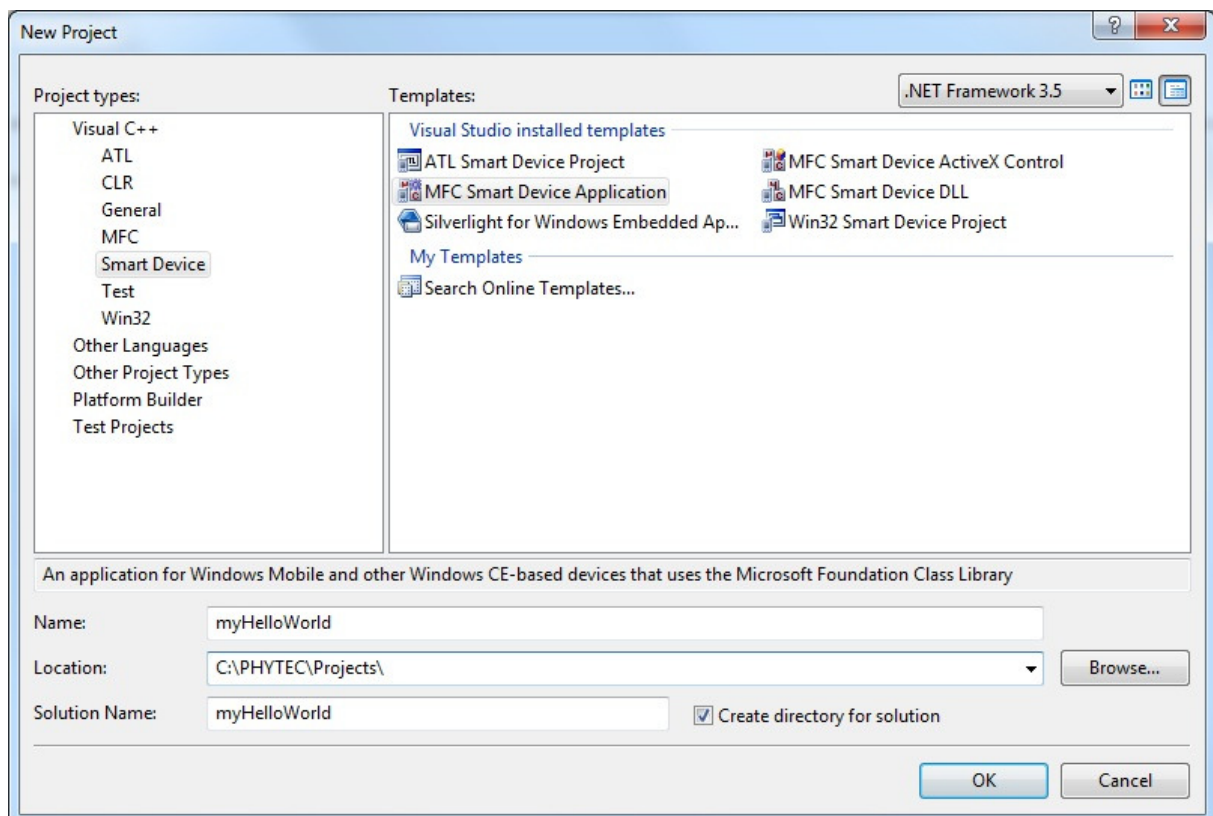
30 min

TIME

In this chapter you will learn how to configure the Visual Studio 2008 IDE (Integrated Development Environment), create a new MFC application, which will print a Hello World message on the serial interface, and build and download a machine-readable output file to the target hardware.

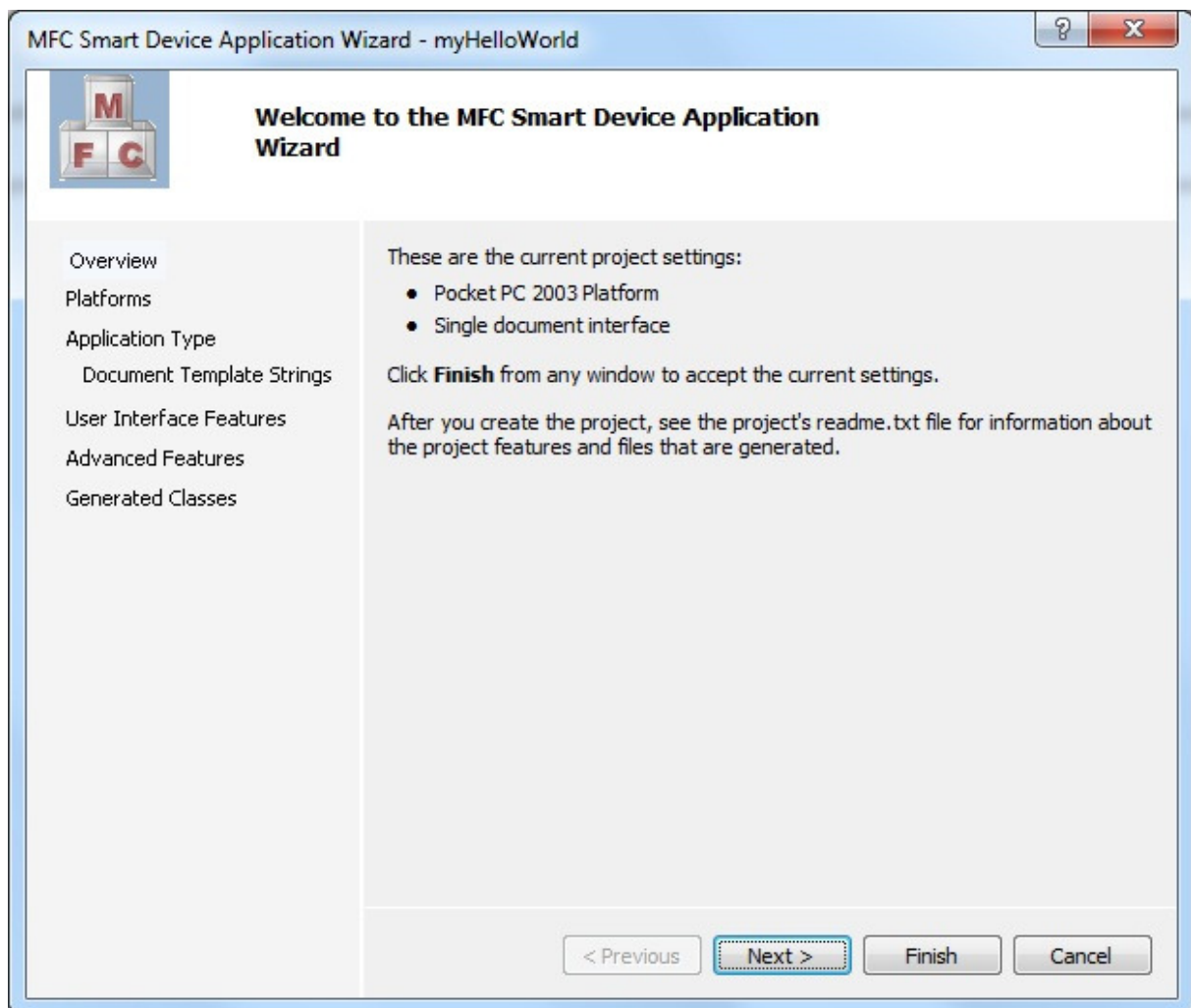
3.1 Creating a New Project

- To create a new project file select *File / New / Project...* from the Visual Studio 2008 menu. This opens a dialog that will ask about the kind of project you wish to create.

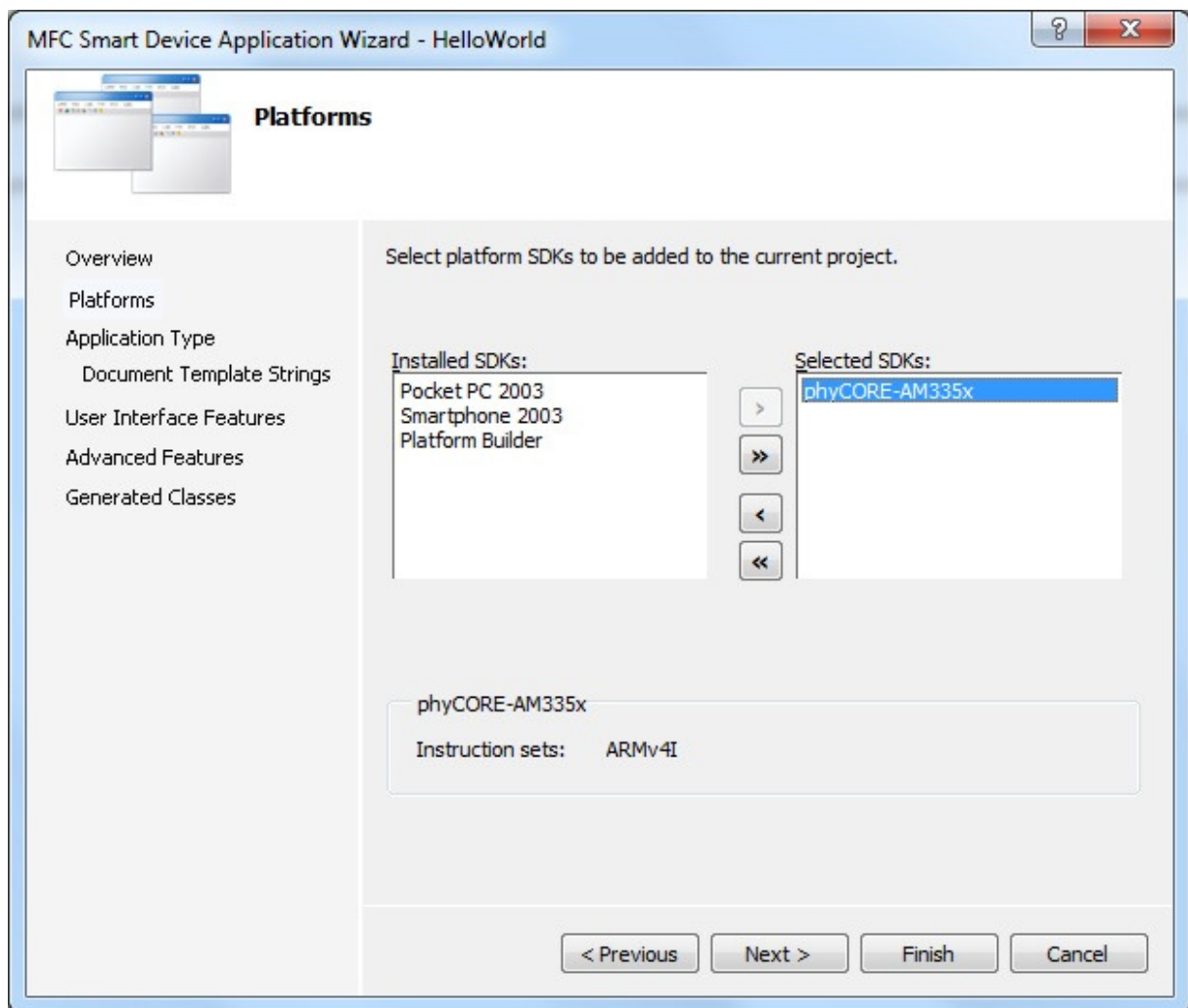


- Open the Visual C++ tree and select *Smart Device*.
- In the Templates field select *MFC Smart Device Application*.

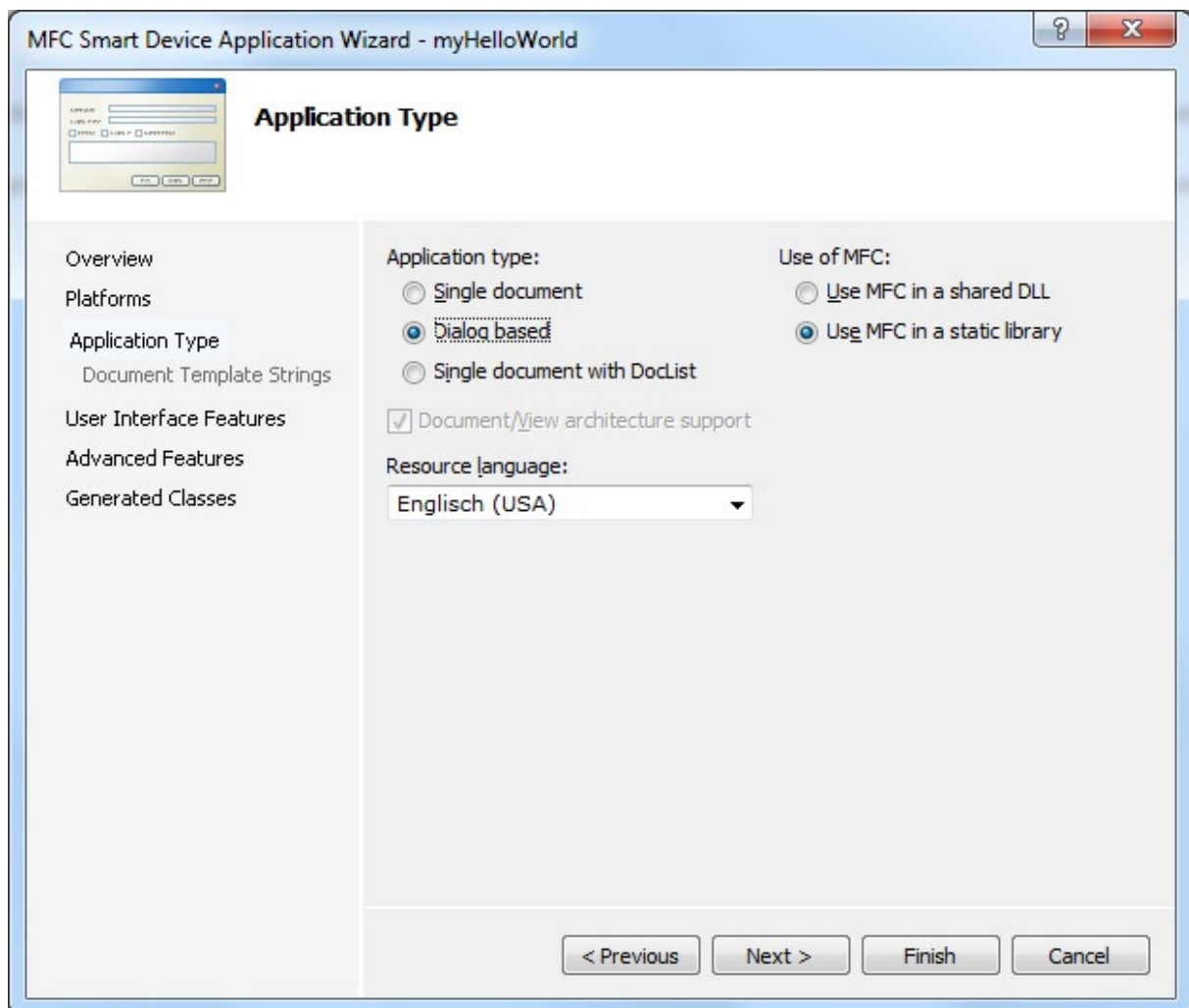
- In the text field Name, enter the name of the project you wish to create, e.g. *myHelloWorld*.
- Click *OK*.



- Click *Next*.



- Click the entry *phyCORE-AM335x* in the field *Installed SDKs:* and click the > button. The *phyCORE-AM335x* will appear in the *Selected SDKs:* field.
- Select *Pocket PC 2003* in the field *Selected SDKs* and press the < button. This removes the *Pocket PC 2003 SDK* from the list of selected SDKs.
- Click *Next >*

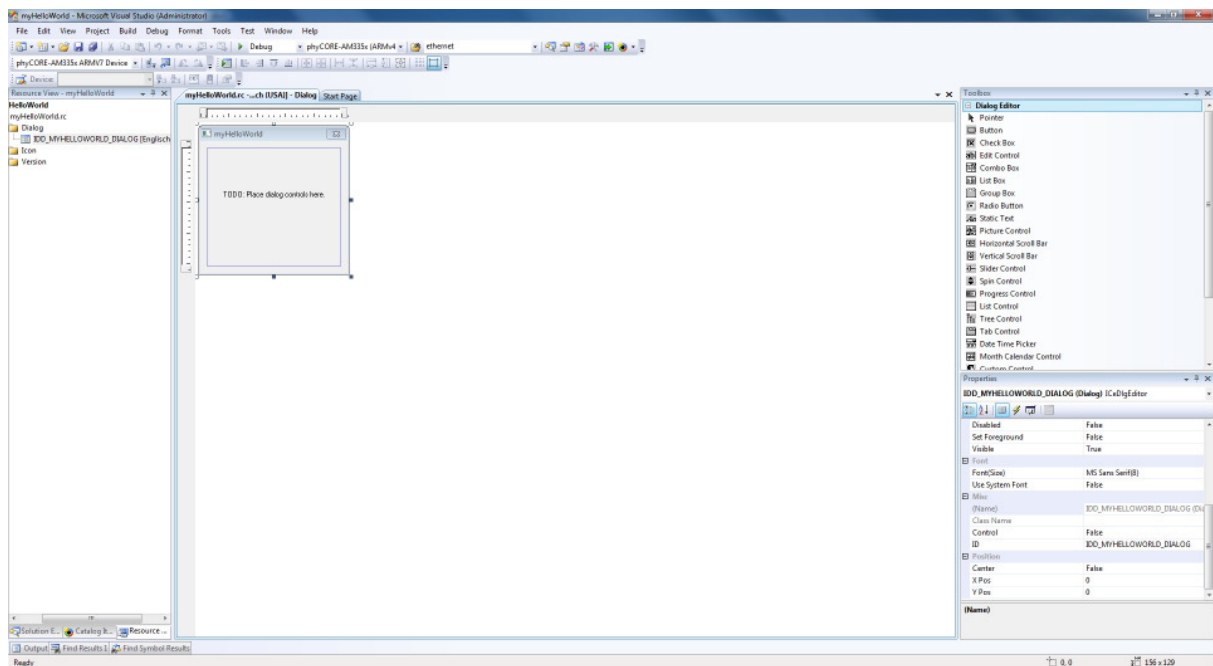


- Select *Dialog based* and press *Finish*.

At this point you have created a new project for the phyCORE-AM335x board. The next step is to modify the C source file before building your project. This includes compiling, linking, locating and creating the executable.

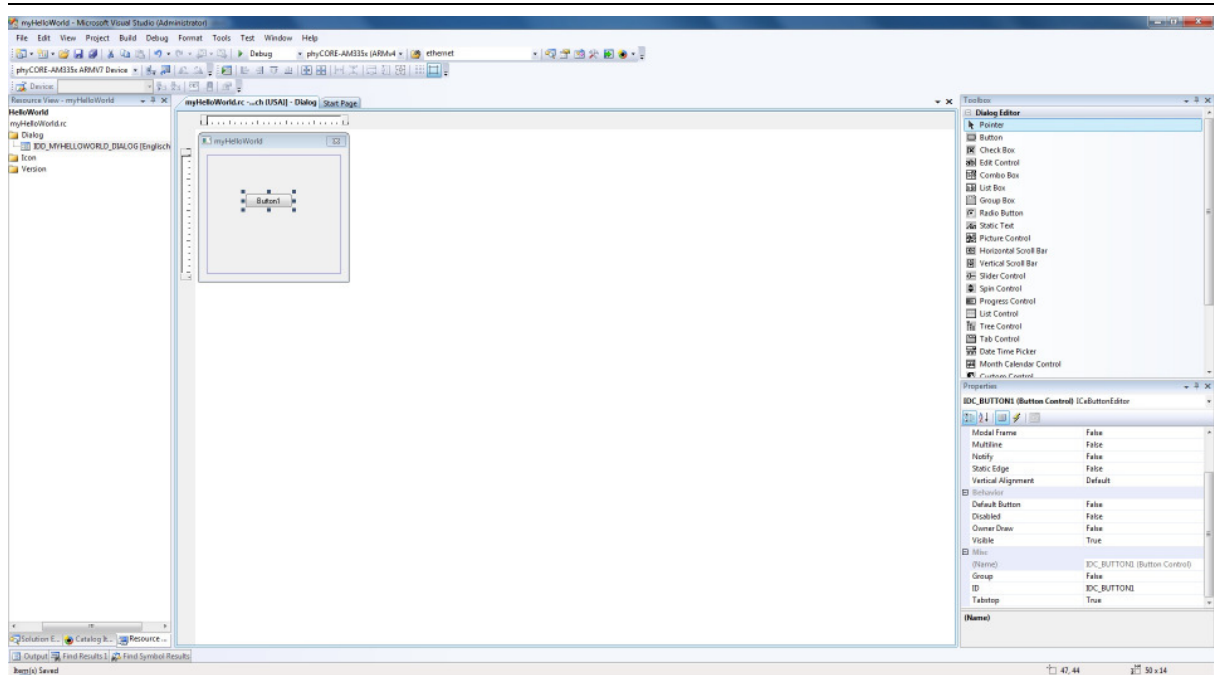
3.2 Create a Button on dialog

Expand *Resource Files* at the Solution Explorer on the left side. Double-click on *myHelloWorld.rc* for opening the *Resource View window*. Expand the *Dialog* folder and double-click the *IDD_MYHELLOWORLD_DIALOG*. Now your development-view has to look like the following.

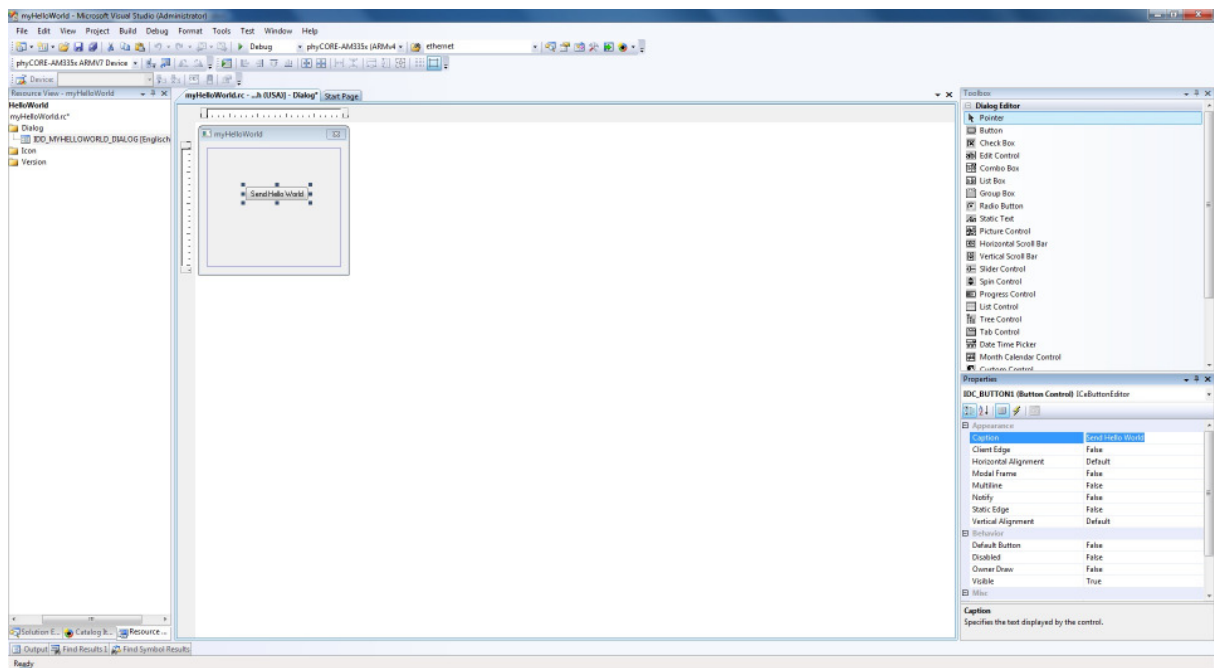


Before we start, select the “TODO: Place dialog controls here” text on the dialog window and delete it.

Have a look at the *Toolbox* window on the right. You can drag and drop any control field in your dialog window *myHelloWorld*. For our example we need only one button. Select the *Button* tool in the toolbox and drag it on your dialog window like below.



To edit the button caption do right-click on the button and select “Properties”. On the properties window edit the “Caption” field in “Send Hello World”.



3.3 Modifying the Source Code

Double-Click on the created button. Visual Studio automatically adds the function for the button. Copy the following code in the `void CmyHelloWorldDlg::OnBnClickedButton1()` function:

```
CString sCom;
HANDLE hComPort;
DCB dcb;
DWORD err = 0;

// name of serial interface, getting from platform.reg
sCom = "COM0:";

// open COM-Port for communication
hComPort = CreateFile ( sCom,
    GENERIC_WRITE | GENERIC_READ,
    0,
    NULL,
    OPEN_EXISTING,
    0,
    NULL);

if(!hComPort)return;

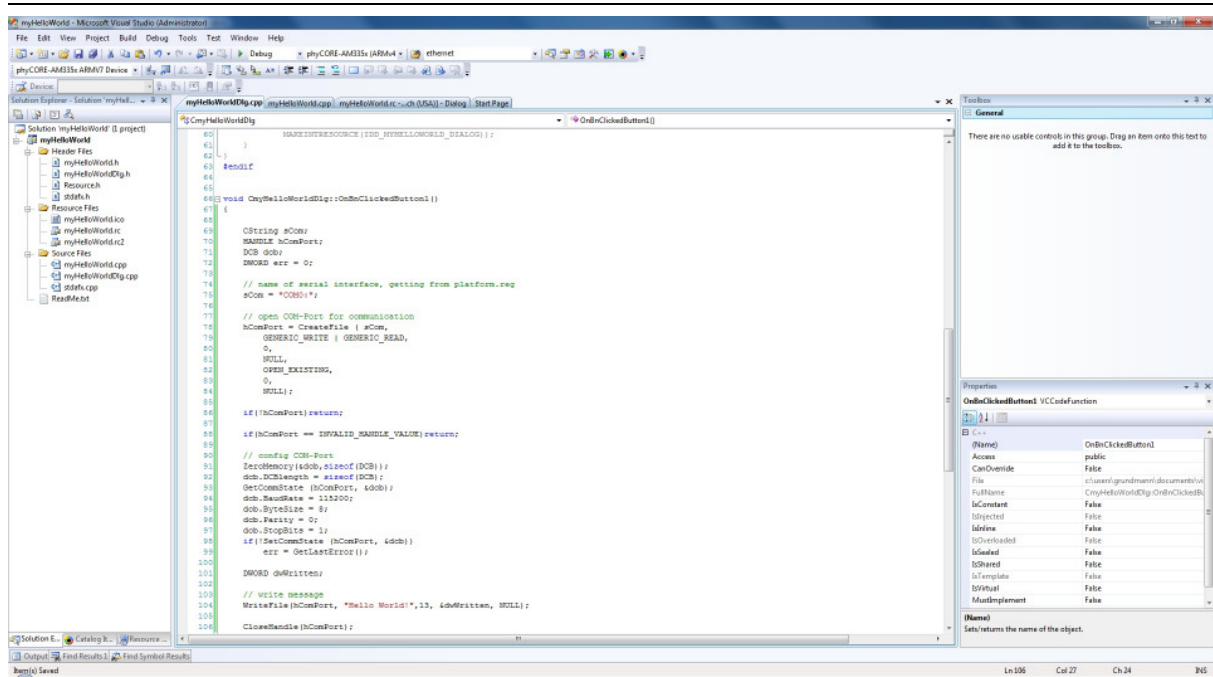
if(hComPort == INVALID_HANDLE_VALUE)return;


// config COM-Port
ZeroMemory(&dcb,sizeof(DCB));
dcb.DCBlength = sizeof(DCB);
GetCommState (hComPort, &dcb);
dcb.BaudRate = 115200;
dcb.ByteSize = 8;
dcb.Parity = 0;
dcb.StopBits = 1;
if(!SetCommState (hComPort, &dcb))
    err = GetLastError();

DWORD dwWritten;

// write message
WriteFile(hComPort, "Hello World!",13, &dwWritten, NULL);


CloseHandle(hComPort);
```



Save the modified file by choosing *File / Save* or by clicking the *save icon* .

3.4 Building the Project

You are now ready to run the compiler and linker.

- Build the target by either selecting the Build icon  on the build toolbar or in the main menu bar select *Build / Build myHelloWorld*.
- If any source file of the project contains any errors, they will be shown in the Output Window - Build tab. Use the editor to correct the error(s) in the source code, save the file and repeat the build.
- If there are no errors, the code can be downloaded to your phyCORE-AM335x device. For this to work you need to have established an Active Sync or Windows Mobile Device Center connection between your PC and your phyCORE-AM335x device as described in section 2.6. When the connection is established select *Build / Deploy myHelloWorld* from the main menu bar.
- The individual steps of the download procedure can be viewed in the Output Window - Build tab.
- Wait until the download is complete.

- The newly created application was now deployed on your phyCORE-AM335x device. To start it select *My Device* on the target platform and go to the folder *Program Files / myHelloWorld* and double tap on “myHelloWorld”.
- Please connect the UART RS232 (X18) to your computer and open the terminal program. Set the configuration like following:

Baudrate:	115200
Databits:	8
Parity:	None
Stopbits:	1

- Click on the “Send Hello World!” button and look at the terminal program for the “Hello World!” message.



You have now modified source code, recompiled the code, created a downloadable file, and successfully executed this modified code.

4 Debugging

**40 min**

TIME

This Debugging section provides a basic introduction to the debug functions included in Visual Studio 2008. The most important features are described by using an existing example. For a more detailed description of the debugging features, please refer to the appropriate manuals provided by Microsoft.

4.1 Starting the Debugger

- Make sure that *Debug* is selected in the *Solution Configurations* pull-down menu.
- Open up the *myHelloWorld* tree and *Source Files*. Double-click on the *myHelloWorldDlg.cpp* file to open the file in the source code editor.
- Locate the following code section

```
// write message
WriteFile(hComPort, "Hello World!",13, &dwWritten, NULL);
```

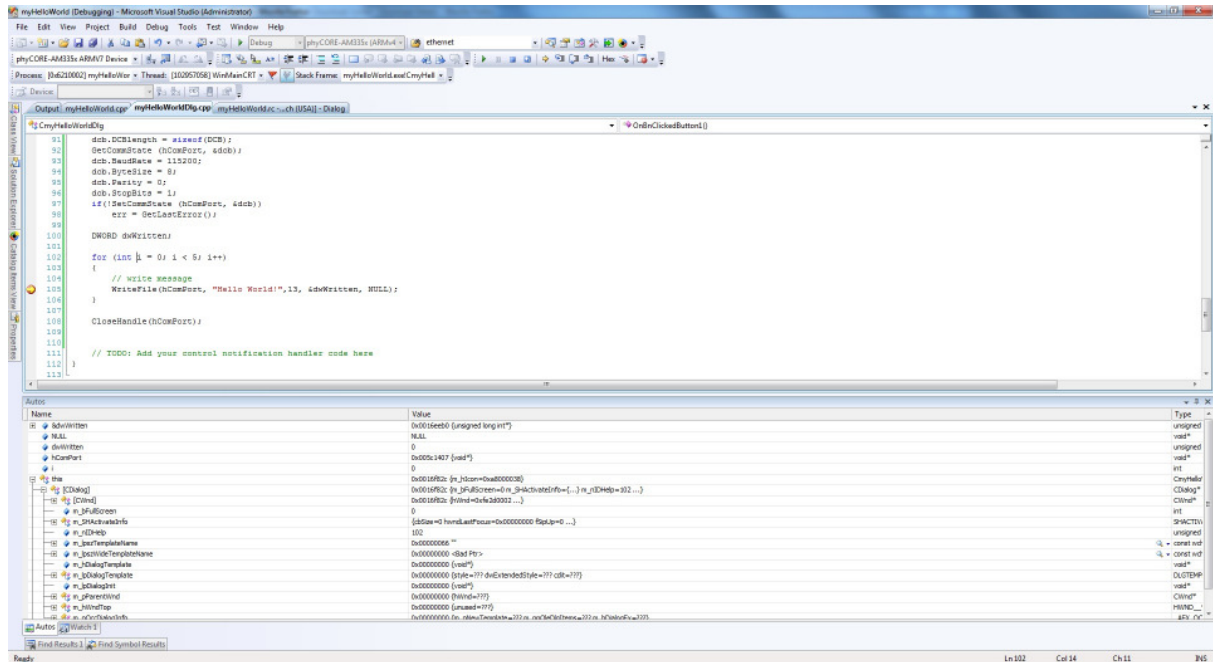
- Edit the line like this

```
for (int i = 0; i < 5; i++)
{
    // write message
    WriteFile(hComPort, "Hello World!\n",13, &dwWritten, NULL);
}
```

- Position the cursor on the “WriteFile” function.
- Select *Debug / Toggle Breakpoint* on the main menu bar or press F9 to set a breakpoint here. The red marker on the left-hand side of the selected line indicates the breakpoint.
- To start debugging with Visual Studio 2008, select *Debug / Start Debugging* or press F5.
- A progress bar will indicate the download process of the debug program.

If a problem occurs during data transfer, an error message will be displayed. If this should occur, make sure you have established a connection between your PC and your phyCORE-AM335x device as described in section 2.5.

If data transfer was successful, a screen similar to the one shown below will appear. The debug toolbar is displayed. In the lower part of the debug screen you will see the *Variables* and *Watch* windows.



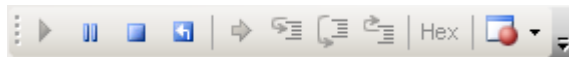
You may need to open, resize and/or move some windows to make your screen look similar to the screen capture. You can open inactive windows by choosing the desired window from the *Debug / Windows* pull-down menu.

The debugger will run up to the code section you have marked with a breakpoint and stop automatically. Notice the yellow arrow pointing to that breakpoint.

You can click on *Debug / Toggle Breakpoint* or press F9 again to remove the breakpoint you have set.

4.2 Visual Studio 2008 Debug Features

- The *Debugger* window toolbar gives access to the following debug commands: *Restart*, *Stop Debugging*, *Break Execution*, *Show Next Statement*, *Step Into*, *Step Over*, *Step Out* and *Run to Cursor*.

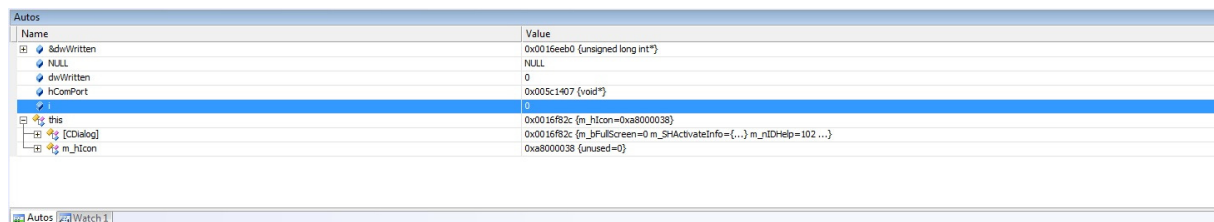




- The first button on the debugger toolbar is the *Start Debugging* button. This starts or continuous debugging.
- The *Break All* halts execution and the editor shows the current source code line.
- The *Stop Debugging* button stops the debugger and will lead you back to your project screen.
- The *Restart* button restarts the execution of the program from the beginning.
- The *Show Next Statement* button allows you to go through your program code line by code line.
- The first button allowing exact control of the program execution is the *Step Into* button. The *Step Into* command performs the execution of the command line to which the *Current-Statement Arrow* points. This can be a C command line or a single assembler line, depending on the current display mode. If the command line is a function call, *Step Into* jumps to the C function or subroutine, enabling you to explore the code contained in the accessed subroutine.
- The *Step Over* button is next on the debugger toolbar. The *Step Over* command executes the command line, to which the *Current-Statement Arrow* points. This can be a C command line or a single assembler line, depending on the current display mode. If the command line is a function call, the function will be executed without single stepping into the function.
- The next button is the *Step Out* button. *Step Out* is used to exit a function you are currently in. *Step Out* is very useful if you find yourself in a function you are not interested in and need to return quickly to your intended function.

- The *Hex* button toggles the display style of watch variables between hexadecimal and decimal.
- The last button pops up a menu where you can choose different windows useful for debugging, like watch windows, process information, memory information and calling stack.

4.3 Using the Visual Studio 2008 Debug Features

- The *Variables* window – *Auto* tab automatically shows the value of the local variable *i*. You can change the number base from decimal to hexadecimal by right clicking on the variable and selecting hexadecimal Display.



- Click *Step Over* several times and watch the value of *i* count up.
- As you can see in the source code, the *for{} loop* will end if *i* becomes equal to 5. To leave the *for{} loop*, change the value of *i* by selecting the value, changing it to **10** and pressing **<Enter>**. Now repeat clicking on *Step Over* until you leave the loop.
- Remove the breakpoint by clicking into the source code line that has the breakpoint and press F9 or the *Insert / Remove Breakpoint* icon.
- To run your program without stopping at any time, delete all breakpoints by clicking on the *Insert / Remove Breakpoint* icon.
- Click the Go  button.
- You can use the *Stop Debugging*  button to stop program execution at any time.

4.4 Changing Target Settings for the "Executable Version"

After successfully debugging the program, next change the project and the target settings in order to create an executable file that can then be downloaded to and executed out of the memory on the phyCORE[®]-AM335x.

- Make sure the program execution is stopped.
- Exit the current debug session by selecting *Stop Debugging*.
- In the *Solution Configurations* pull down menu select 'Release'.
- Build and execute your project.

You can now watch your final example on the screen of your phyCORE-AM335x device.



You have successfully finished the debug section of this QuickStart. You learned how to set breakpoints, run your program to a specific line of code and inspect variables.

5 Building an image



50 min

In this section you will learn how to add your own application to a WinCE project, create a new image and download this image on the phyCORE-AM335x. We will use the application build and debugged in the chapters before as an example.

5.1 Changing an image

First you need a project to build the image with. In this example you can use the project we provide on the phyCORE-AM335x WEC7-Kit CD, which is already installed on your system.

- Open Visual Studio 2008, if not already open.
- To open the project select *File / Open / Project/Solution...* from the Visual Studio 2008 menu bar.
- Browse to the folder *C:\WINCE700\OSDesigns\PhytecAM335x_RDK* and select the project *PhytecAM335x_RDK*.

When the project is loaded you will see the project in the *Solution Explorer* Tab in the left window. If a dialog “Missing Catalog Items in OS Design” appears, just press *Cancel*.

Open the *Solution Explorer* on the left side and expand *PhytecAM335x_RDK\Parameter Files* and double click on *OSDesign.bib*. Under the “Files” section add the following line:

```
HelloWorld.exe "C:\PHYTEC\PCM051_phyCORE-AM335x\WEC7-Kit\QuickStart\Demos\Demo\  
HelloWorld\HelloWorld\ phyCORE-AM335x (ARMV4I)\Debug\HelloWorld.exe" NK
```

This will add the executable *HelloWorld.exe* to the Windows directory of the target. The path tells the platform builder where to find the executable that should be added to the image and the parameter NK specifies the name of the memory region where it should be added to.

To build a new image, select *Build / Build Solution* from the Visual Studio 2008 menu bar. The build process will take about 20 minutes, depending on your host platform hardware.



You don't have always to do a complete build process that takes this long. If you just want to add a file to the image like in the example before, you can do this by selecting *Build / Copy Files to Release Directory*. This copies all necessary files to the *Release* directory. Then you can build the image with *Build / Make Run-Time Image*. This takes only about 1 minute. Please refer to the Visual Studio 2008/Platformbuilder documentation for more information.

5.2 Download an image

In the next step we want to download the image to the target.

For this step you need a terminal program like HyperTerminal or another terminal program like Putty if you are using Windows 7.

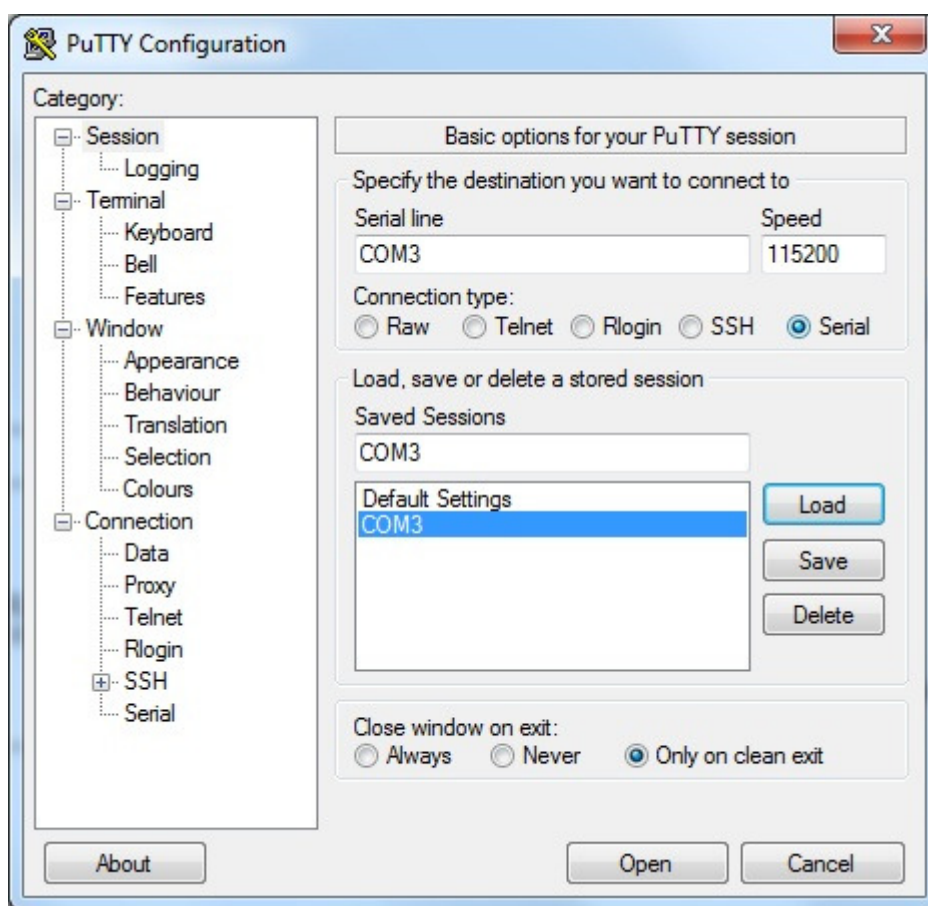
5.2.1 Configure terminal program on Windows 7 / Vista

If you are using Windows 7 / Vista it is necessary to download a terminal program like Putty, because Hyper Terminal is not yet included under Windows 7 / Vista.

Download Putty here:

<http://www.putty.org/>

After downloading Putty.exe to your PC, execute and configure it like the following screenshot:

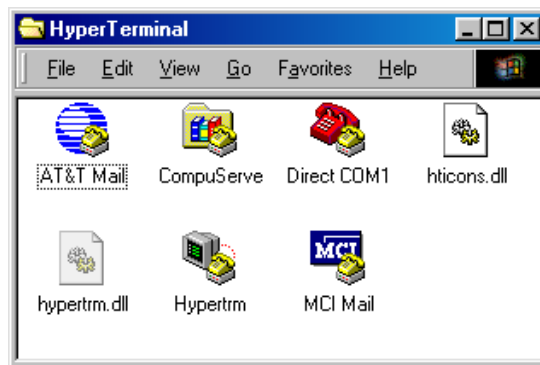


You have to change “COM3” to your correct serial interface number on your PC.

5.2.2 Configure Hyper Terminal on Windows XP

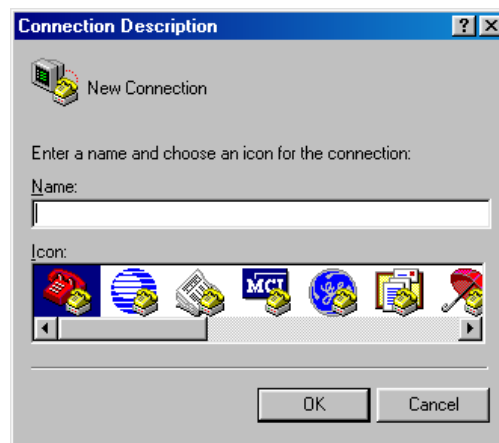
Start the HyperTerminal program within the *Programs / Accessories* bar.

The HyperTerminal main window will now appear:



Double-click on the HyperTerminal icon “Hypertrm” to create a new HyperTerminal session.

The Connection Description window will now appear. Enter “COM Direct” in the *Name* text field.

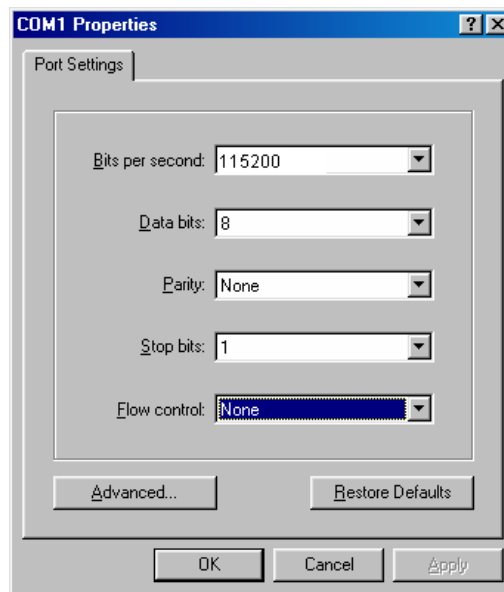


Next click *OK*. This creates a new HyperTerminal session named “COM Direct” and advances you to the next HyperTerminal window.



The *COM Direct Properties* window will now appear. Specify *Direct to COM1/COM2* under the *Connect Using* pull-down menu (be sure to indicate the correct COM setting for your system).

Click the *Configure* button in the *COM Direct Properties* window to advance to the next window (*COM1/COM2 Properties*).

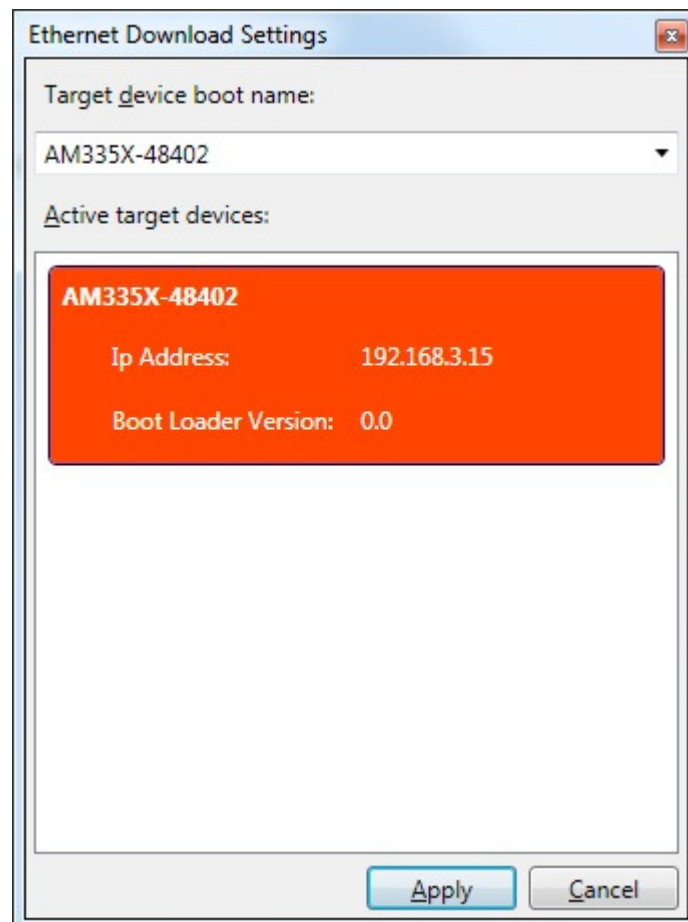


- Set the following COM parameters: Bits per second = 115200; Data bits = 8; Parity = *None*; Stop Bits = 1; Flow Control = *None*.
- Selecting *OK* advances you to the *COM Direct-HyperTerminal* monitoring window. Notice the connection status report in the lower left corner of the window.

5.2.3 Downloading Image

- Connect the UART RS232 (X18) on carrier board to the computer.
- Power up the baseboard.
- You will now see some output messages from the bootloader in the terminal window. Press space to stop the bootloader.
- Connect the cross-over Ethernet cable with the Ethernet connector on the target and the right network card of your host.
- Press '4' for submenu *Network Settings*. Press '6' to change the IP address of the device and '7' to change the network mask. Change the default settings so it will fit to the network settings on your PC.
- Press '5' to disable DHCP.
- Press '0' to go back to main menu.
- Press '2' for *Select Boot Device* and then choose '1' for *Internal EMAC*.

- Press '7' to save the configuration.
- Press '0' for start downloading the image. You will see some output messages followed by a BOOTME message.
- Select *Target Attach Device...* from the Visual Studio 2008 menu bar.
- Following windows should appear:

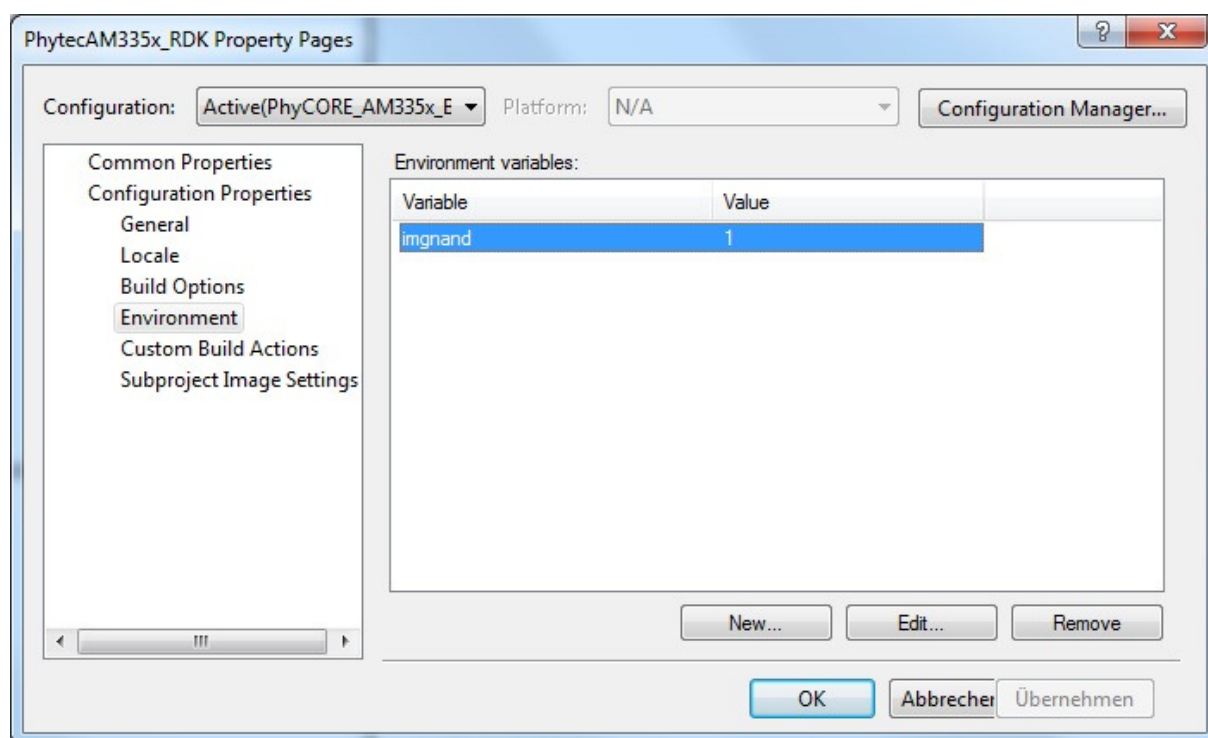


- Select the AM335X device and exit by clicking "Apply".
- A download message with a status bar should appear and the download should start.
- When the download is finished, the image should start. Calibrate the touch panel, then navigate to the folder *MyDevice\Windows*. There you find your HelloWorld application that can be executed.

In this example the image that was build is a RAM image.

- Reset the device and press space to stop the bootloader.
- Press '2' for *Select Boot Device* and then choose '2' for *NK from NAND*.
- Press '7' to save the configuration.
- Press '0' and the original image from flash will be started again.

To build an image that can be stored in flash, select *Project -> OMAP4Phytec Properties...* in the Visual Studio 2008. On the *OMAP4Phytec Property Pages* expand *Configuration Properties* and select *Environment*. Click on "New..." and write IMG NAND as "Variable name" with the "Variable Value" set to "1". Confirm your entry by clicking "OK". Now, your **Property Page** have to looks like the following screenshot.



Click "OK" and select *Build -> Make run-time image* in Visual Studio. Please read Appendix A "How to install Windows Embedded Compact on the phyCORE-AM335x" for information on how to flash the image.



You have successfully finished this QuickStart.

SUCCESS

6 Summary

This QuickStart Instruction gave a general "Rapid Development Kit" description, as well as software installation advice and an example program enabling quick out-of-the box start-up of the phyCORE[®]-AM335x in conjunction with WinCE.

In the *Getting started* section you learned how to configure your host to provide a basis for working with your target platform. You installed the Rapid Development Kit software and you learned to copy and run a program on the target.

In the *Getting More Involved* section you got a step-by-step instruction on how to modify the example, create and build new projects and copy output files to the phyCORE[®]-AM335x using Visual Studio 2008.

The *Debugging* part of this QuickStart gave you information on setting up and using the debugger with Visual Studio 2008. You learned how to set breakpoints, watching and changing variables content.

In the *Building an Image* section you learned how to build a new image based on a preconfigured BSP and project.

7 How to install Windows Embedded Compact on the phyCORE-AM335x Kit

In this section will be described how to get Windows Embedded Compact 7 on the Rapid development KIT.

7.1 SD-Card preparation

Please format the SD-Card within windows-command-line with the following command:

format G: /FS:FAT32 /Q /A:512

G: is the volume used in the example. You have to edit the volume.

On the phyCORE-AM335x KIT-CD will be all necessary files to install Windows Embedded Compact 7 on the device. Otherwise you can find the files on the Phytex FTP:

<ftp://ftp.phytex.de/pub/Products/phyCORE-AM335x/WEC7/>

Please copy following files located on the CD to the formatted SD-Card:

..\WEC7-Kit\BSP\Bootloader\NAND\XLRDRNAND.bin

..\ WEC7-Kit\BSP\Bootloader\NAND\EBOOTND.bin

..\ WEC7-Kit\BSP\Bootloader\SDCARD\MLO

..\ WEC7-Kit\BSP\Bootloader\SDCARD\ebootSD.nb0

..\ WEC7-Kit\BSP\Image\NAND\NK.bin

7.2 Configuring boot jumper

Set the S5 boot jumper configuration to boot from SD-Card like the following table:

S5

8	7	6	5	4	3	2	1
ON	ON	ON	OFF	ON	ON	ON	ON

7.3 Configure terminal program

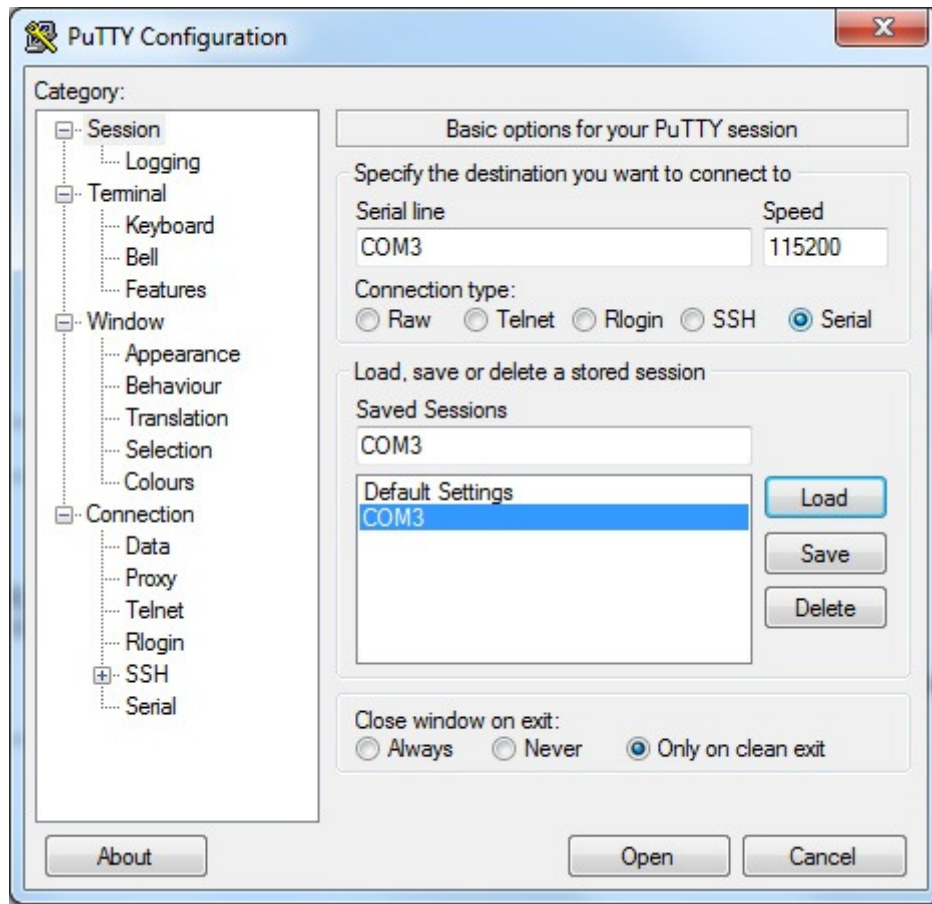
7.3.1 Windows 7 / Vista

If you are using Windows 7 / Vista it is necessary to download a terminal program like Putty, because Hyper Terminal is not yet included under Windows 7 / Vista.

Download Putty here:

<http://www.putty.org/>

After downloading Putty.exe to your PC, execute and configure it like the following screenshot:

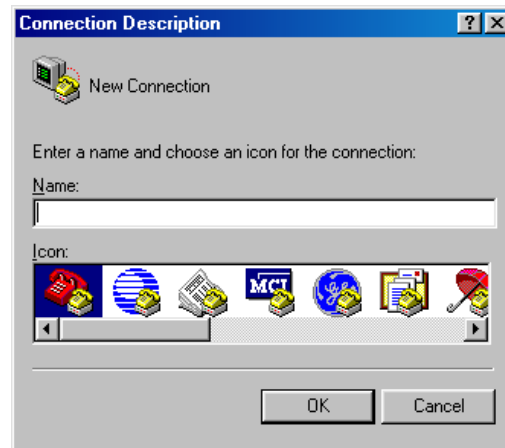


You have to change “COM3” to your correct serial interface number on your PC.

7.3.2 Windows XP

Start the HyperTerminal (Programs → Accessoires → Communication → Hyper Terminal) and configure it like the following steps:

Type “COM Direkt” in the coming window:

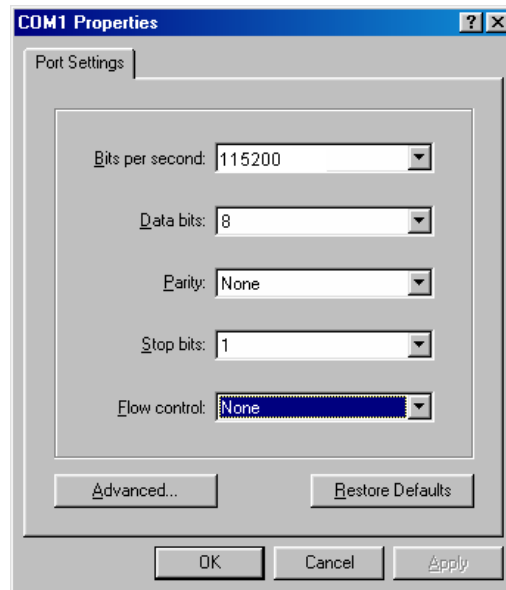


Next click on *OK*. This creates a new HyperTerminal session named “COM Direct” and advances you to the next HyperTerminal window.



The *COM Direct Properties* window will now appear. Specify *Direct to COM1/COM2* under the *Connect Using* pull-down menu (be sure to indicate the correct COM setting for your system).

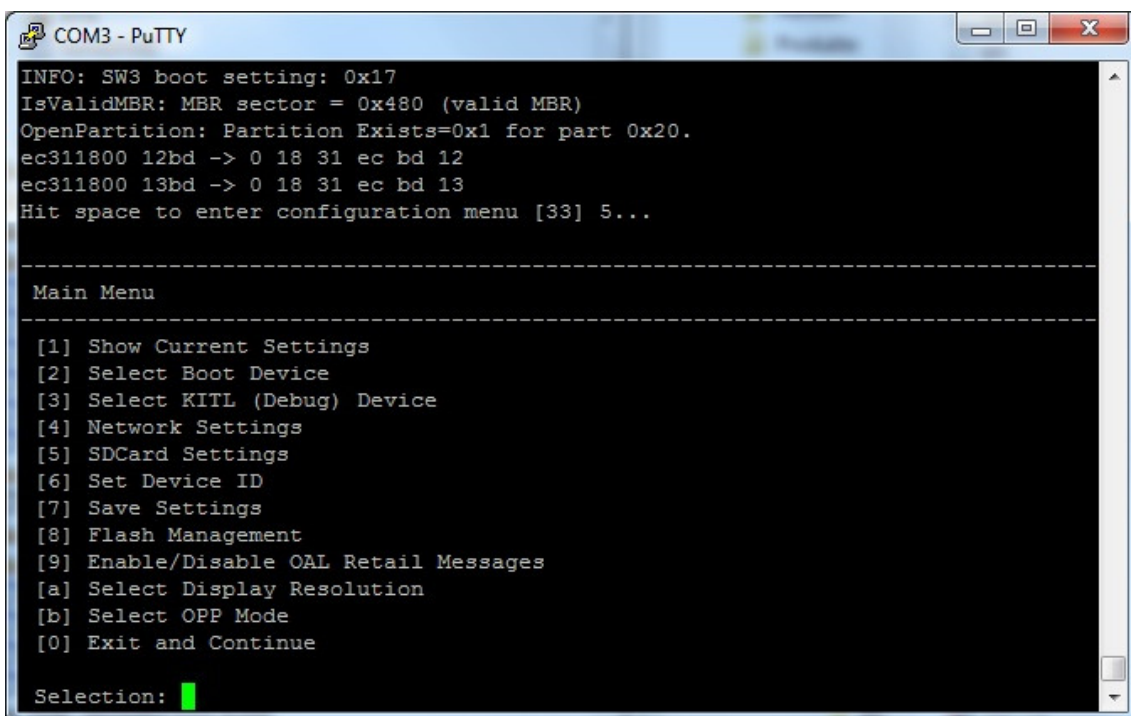
Click the *Configure* button in the *COM Direct Properties* window to advance to the next window (*COM1/COM2 Properties*).



- Set the following COM parameters: Bits per second = 115200; Data bits = 8; Parity = *None*; Stop Bits = 1; Flow Control = *None*.
- Selecting *OK* advances you to the *COM Direct-HyperTerminal* monitoring window. Notice the connection status report in the lower left corner of the window.
- Connect the UART RS232 to the computer and insert the SD-Card in the SD-Card Slot and power up the baseboard.

7.4 Update Bootloader (XLDR / EBOOT)

After powering up the baseboard the following boot main menu should appear on the terminal window:



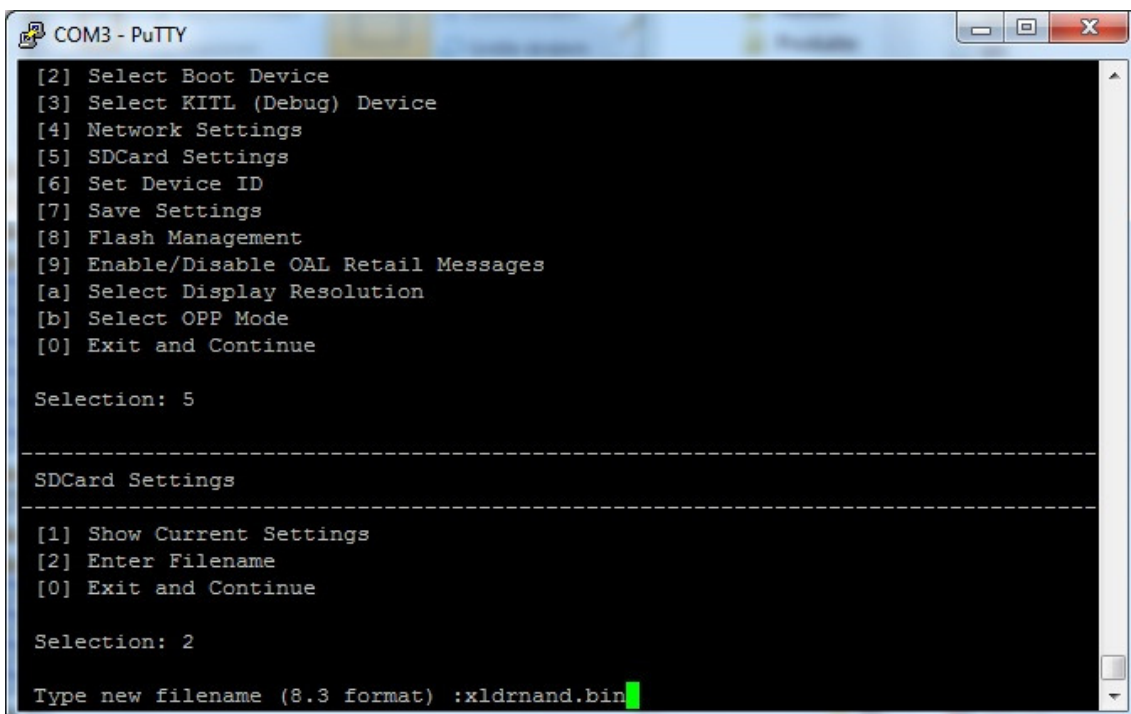
```
COM3 - PuTTY
INFO: SW3 boot setting: 0x17
IsValidMBR: MBR sector = 0x480 (valid MBR)
OpenPartition: Partition Exists=0x1 for part 0x20.
ec311800 12bd -> 0 18 31 ec bd 12
ec311800 13bd -> 0 18 31 ec bd 13
Hit space to enter configuration menu [33] 5...

-----
Main Menu
-----

[1] Show Current Settings
[2] Select Boot Device
[3] Select KITL (Debug) Device
[4] Network Settings
[5] SDCard Settings
[6] Set Device ID
[7] Save Settings
[8] Flash Management
[9] Enable/Disable OAL Retail Messages
[a] Select Display Resolution
[b] Select OPP Mode
[0] Exit and Continue

Selection: █
```

Select “[5] SDCard settings” to enter “SDCard Settings”-Menu. Press “2” for “Enter Filename” and type “xldrnan.d.bin” like in the screenshot below. Confirm your entry with ENTER-Key.



```
COM3 - PuTTY

[2] Select Boot Device
[3] Select KITL (Debug) Device
[4] Network Settings
[5] SDCard Settings
[6] Set Device ID
[7] Save Settings
[8] Flash Management
[9] Enable/Disable OAL Retail Messages
[a] Select Display Resolution
[b] Select OPP Mode
[0] Exit and Continue

Selection: 5

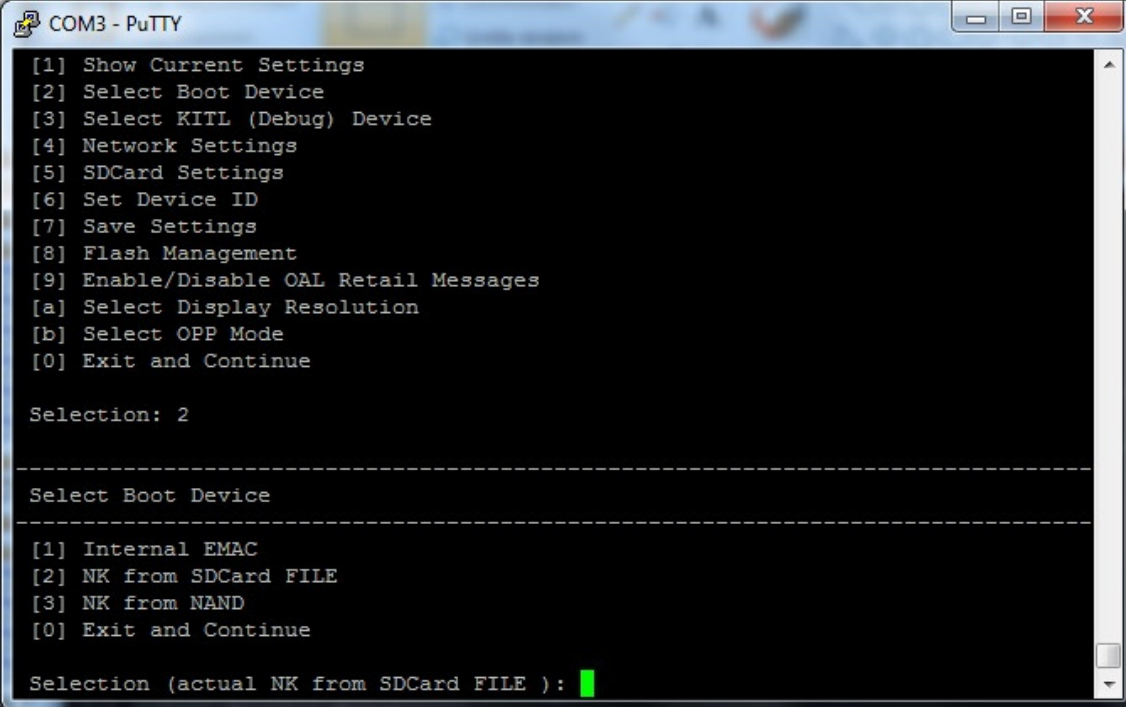
-----
SDCard Settings
-----

[1] Show Current Settings
[2] Enter Filename
[0] Exit and Continue

Selection: 2

Type new filename (8.3 format) :xldrnan.d.bin █
```

Select “[0] Exit and Continue” to go back to the main menu. Now you have to configure the bootloader to select your typed file from the SD-Card. Select “[2] Select Boot Device” to enter boot device menu. Configure the boot order to *NK from SDCard File*.



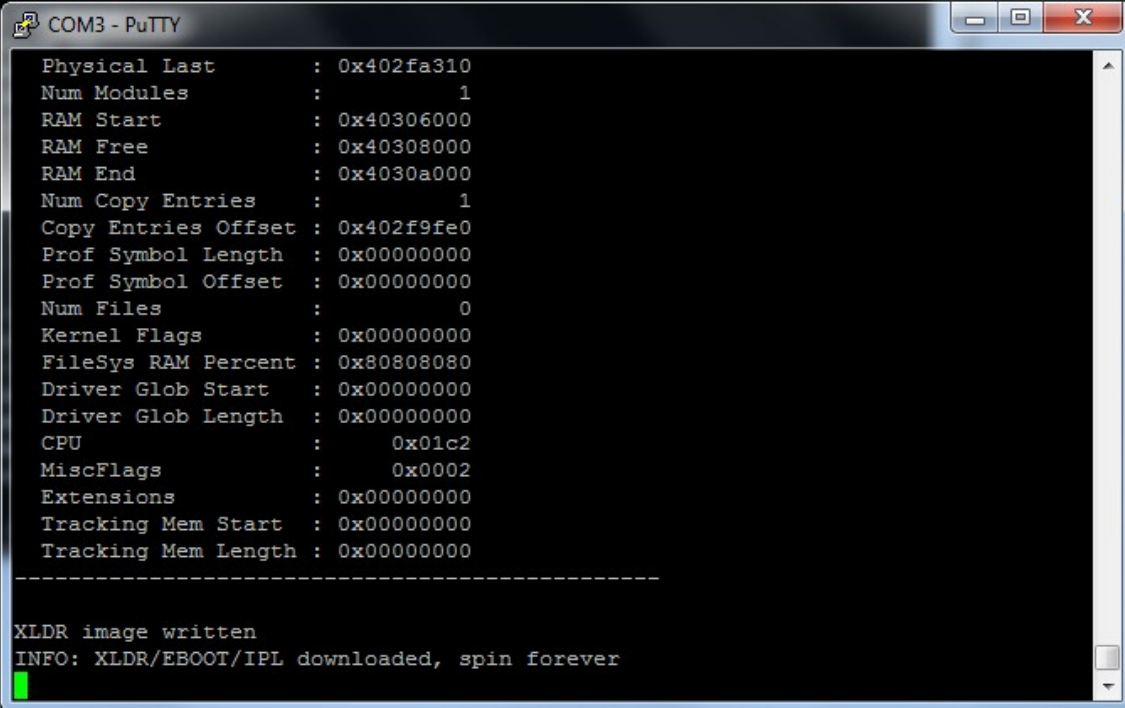
```
COM3 - PuTTY
[1] Show Current Settings
[2] Select Boot Device
[3] Select KITL (Debug) Device
[4] Network Settings
[5] SDCard Settings
[6] Set Device ID
[7] Save Settings
[8] Flash Management
[9] Enable/Disable OAL Retail Messages
[a] Select Display Resolution
[b] Select OPP Mode
[0] Exit and Continue

Selection: 2

-----
Select Boot Device
-----
[1] Internal EMAC
[2] NK from SDCard FILE
[3] NK from NAND
[0] Exit and Continue

Selection (actual NK from SDCard FILE ): █
```

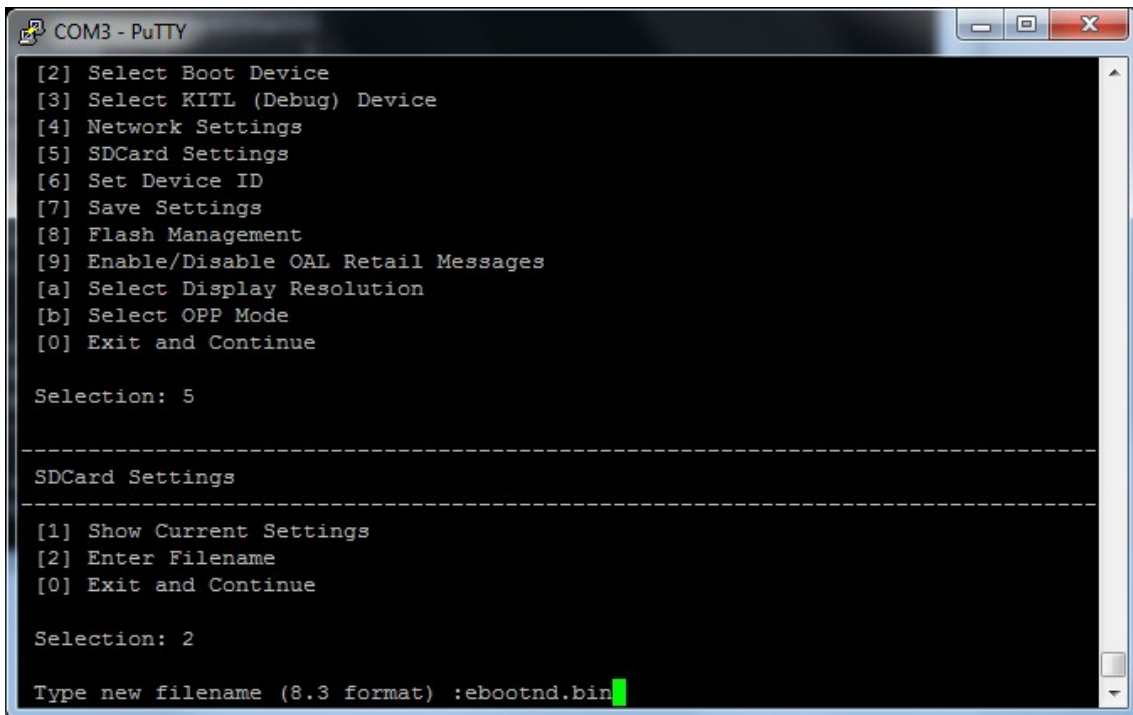
Back to the main menu select “[0] Exit and Continue” to start downloading *xldrnan.d.bin*. Following screenshot shows successful *XLDR* update.



```
COM3 - PuTTY
Physical Last      : 0x402fa310
Num Modules       : 1
RAM Start         : 0x40306000
RAM Free          : 0x40308000
RAM End           : 0x4030a000
Num Copy Entries  : 1
Copy Entries Offset : 0x402f9fe0
Prof Symbol Length : 0x00000000
Prof Symbol Offset : 0x00000000
Num Files         : 0
Kernel Flags      : 0x00000000
FileSys RAM Percent : 0x80808080
Driver Glob Start : 0x00000000
Driver Glob Length : 0x00000000
CPU               : 0x01c2
MiscFlags         : 0x0002
Extensions        : 0x00000000
Tracking Mem Start : 0x00000000
Tracking Mem Length : 0x00000000
-----
XLDR image written
INFO: XLDR/EBOOT/IPL downloaded, spin forever
```

You have successfully updated the first stage bootloader. The next steps will be for programming the second stage bootloader called *EBOOT*.

Press the Reset-Button on the baseboard to booting from the SD-Card again. Select “[5] SDCard settings” and press “2” to enter the file name like following screenshot.



```
COM3 - PuTTY
[2] Select Boot Device
[3] Select KITL (Debug) Device
[4] Network Settings
[5] SDCard Settings
[6] Set Device ID
[7] Save Settings
[8] Flash Management
[9] Enable/Disable OAL Retail Messages
[a] Select Display Resolution
[b] Select OPP Mode
[0] Exit and Continue

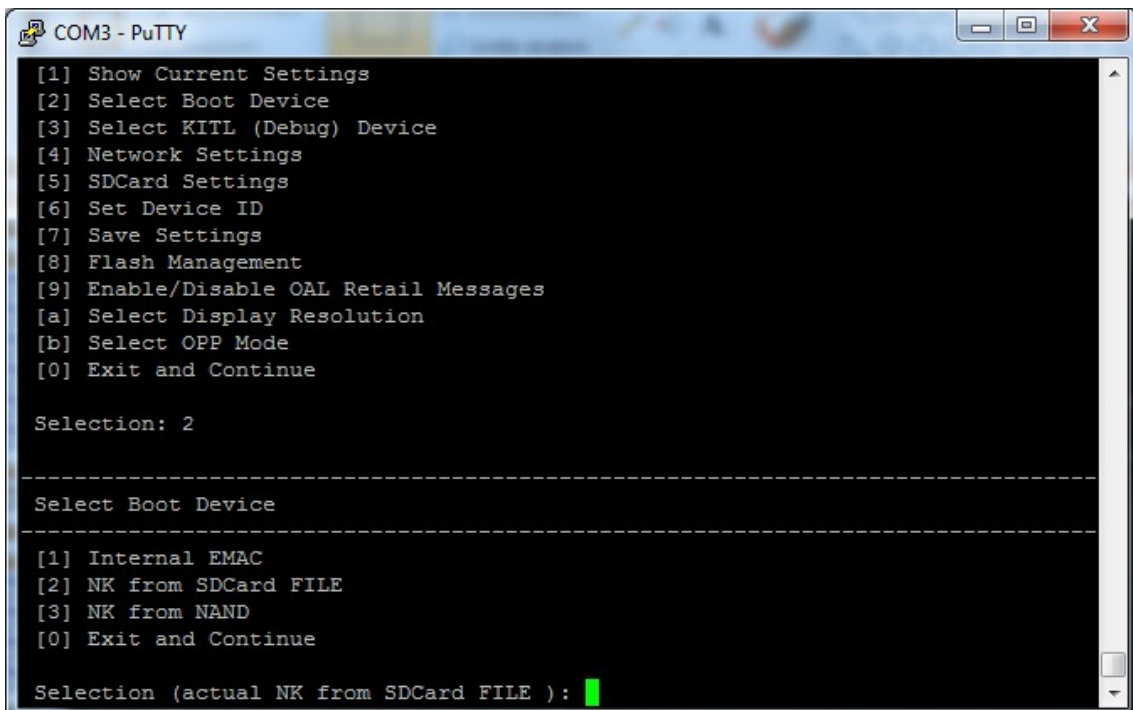
Selection: 5

-----
SDCard Settings
-----
[1] Show Current Settings
[2] Enter Filename
[0] Exit and Continue

Selection: 2

Type new filename (8.3 format) :ebootnd.bin
```

Select “[0] Exit and continue” to go back to the main menu and configure the boot order to boot from SD-Card.



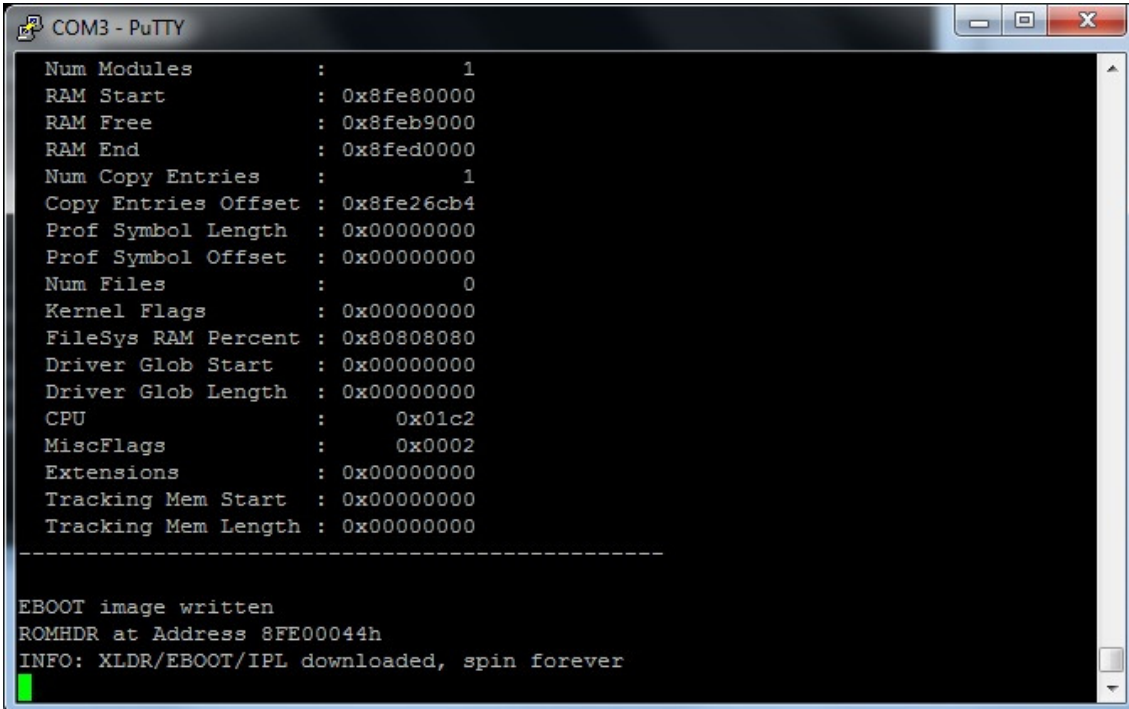
```
COM3 - PuTTY
[1] Show Current Settings
[2] Select Boot Device
[3] Select KITL (Debug) Device
[4] Network Settings
[5] SDCard Settings
[6] Set Device ID
[7] Save Settings
[8] Flash Management
[9] Enable/Disable OAL Retail Messages
[a] Select Display Resolution
[b] Select OPP Mode
[0] Exit and Continue

Selection: 2

-----
Select Boot Device
-----
[1] Internal EMAC
[2] NK from SDCard FILE
[3] NK from NAND
[0] Exit and Continue

Selection (actual NK from SDCard FILE) :
```

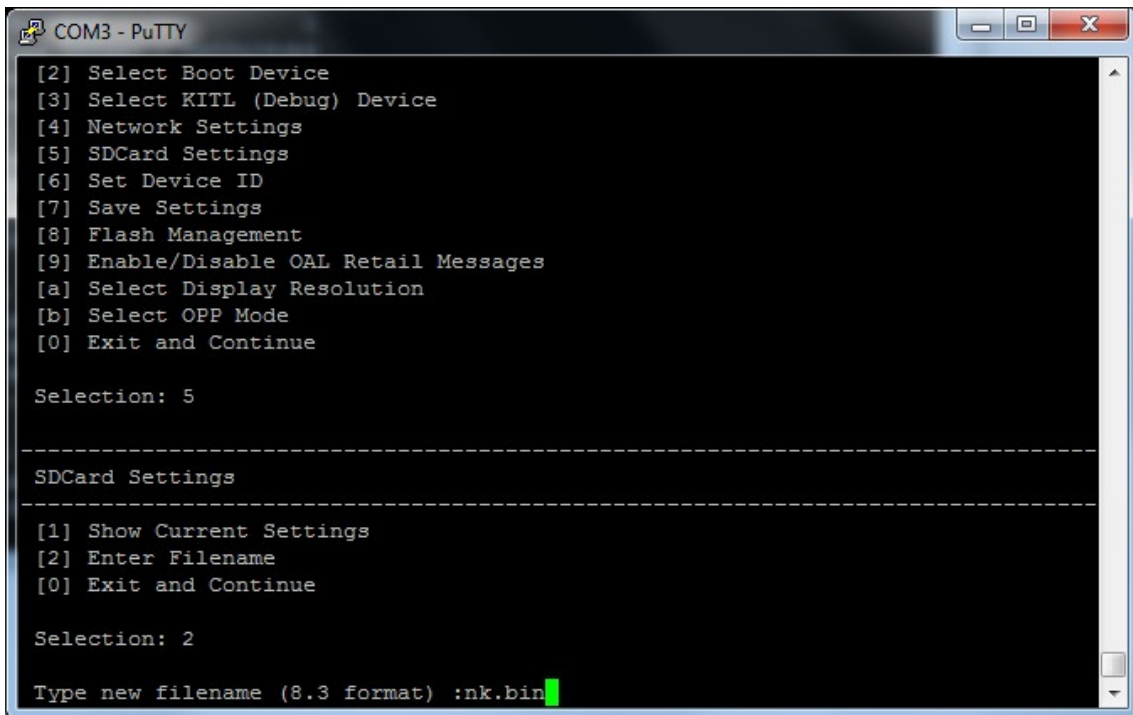
Back to the main menu select “[0] Exit and Continue” to start downloading *ebootnd.bin*. Following screenshot shows successful *EBOOT* update.



```
COM3 - PuTTY
Num Modules      :      1
RAM Start       : 0x8fe80000
RAM Free        : 0x8feb9000
RAM End         : 0x8fed0000
Num Copy Entries :      1
Copy Entries Offset : 0x8fe26cb4
Prof Symbol Length : 0x00000000
Prof Symbol Offset : 0x00000000
Num Files       :      0
Kernel Flags    : 0x00000000
FileSys RAM Percent : 0x80808080
Driver Glob Start : 0x00000000
Driver Glob Length : 0x00000000
CPU             :      0x01c2
MiscFlags       :      0x0002
Extensions      : 0x00000000
Tracking Mem Start : 0x00000000
Tracking Mem Length : 0x00000000
-----
EBOOT image written
ROMHDR at Address 8FE00044h
INFO: XLDR/EBOOT/IPL downloaded, spin forever
```

You have successfully updated the second stage bootloader. The next steps will be for programming the WEC7 image called *NK.bin*.

Press the Reset-Button on the baseboard to booting from the SD-Card again. Select “[5] SDCard settings” and press “2” to enter the file name like following screenshot.



```
COM3 - PuTTY
[2] Select Boot Device
[3] Select KITL (Debug) Device
[4] Network Settings
[5] SDCard Settings
[6] Set Device ID
[7] Save Settings
[8] Flash Management
[9] Enable/Disable OAL Retail Messages
[a] Select Display Resolution
[b] Select OPP Mode
[0] Exit and Continue

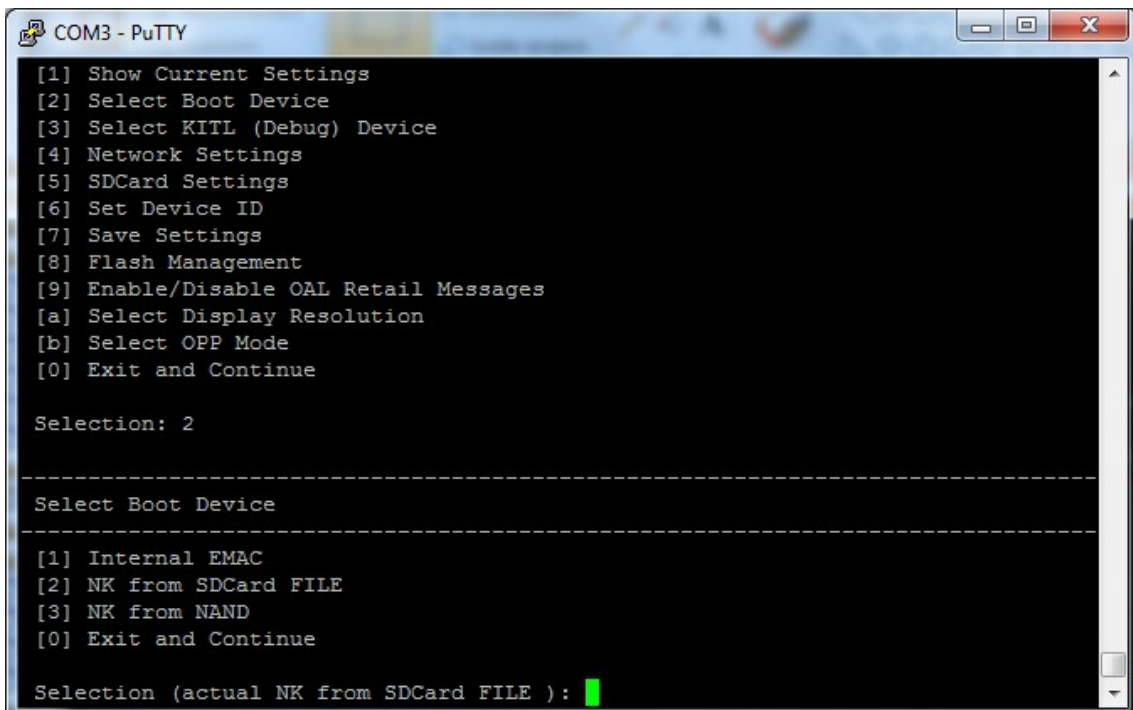
Selection: 5

-----
SDCard Settings
-----
[1] Show Current Settings
[2] Enter Filename
[0] Exit and Continue

Selection: 2

Type new filename (8.3 format) :nk.bin
```

Select “[0] Exit and continue” to go back to the main menu and configure the boot order to boot from SD-Card.



```
COM3 - PuTTY
[1] Show Current Settings
[2] Select Boot Device
[3] Select KITL (Debug) Device
[4] Network Settings
[5] SDCard Settings
[6] Set Device ID
[7] Save Settings
[8] Flash Management
[9] Enable/Disable OAL Retail Messages
[a] Select Display Resolution
[b] Select OPP Mode
[0] Exit and Continue

Selection: 2

-----
Select Boot Device
-----
[1] Internal EMAC
[2] NK from SDCard FILE
[3] NK from NAND
[0] Exit and Continue

Selection (actual NK from SDCard FILE) :
```

Back to the main menu select “[0] Exit and Continue” to start downloading *NK.bin*. This step takes a while, because of the big file size. After successful program the image execute directly and boot up in WEC7 like the following screenshot.

```

COM3 - PuTTY
Copy Entries Offset : 0x80cdef14
Prof Symbol Length : 0x00000000
Prof Symbol Offset : 0x00000000
Num Files          :          75
Kernel Flags       : 0x00000000
FileSys RAM Percent : 0x80808080
Driver Glob Start  : 0x00000000
Driver Glob Length : 0x00000000
CPU                :    0x01c2
MiscFlags          :    0x0002
Extensions         : 0x80003020
Tracking Mem Start : 0x00000000
Tracking Mem Length : 0x00000000
-----
NK Image Loaded
Launch Windows CE image by jumping to 0x80002000...

Windows CE Kernel for ARM (Thumb Enabled)
CPU CP15 Control Register = 0xc5387f
CPU CP15 Auxiliary Control Register = 0x42
+OALTimerInit(1, 24000, 200)
--- High Performance Frequency is 24 MHz---

```

You have successfully updated the device with Windows Embedded Compact 7.

To boot the device from NAND flash you have to change the boot jumper configuration S5 like the following:

8	7	6	5	4	3	2	1
ON	ON	ON	OFF	OFF	ON	ON	ON

Remove the SD-Card Power OFF and power ON the baseboard. The bootloader should execute Windows Embedded Compact from NAND flash.

Document: WEC7-Kit with phyCORE[®]-AM335x QuickStart Instructions
Document number: L-780e_0 October 2012

How would you improve this manual?

Did you find any mistakes in this manual? _____ page

Submitted by:

Customer number: _____

Name: _____

Company: _____

Address: _____

Return to:

PHYTEC Technologie Holding AG
Robert-Koch-Str. 39
55129 Mainz, Germany
Fax: +49 (6131) 9221-33

Published by

PHYTEC

© PHYTEC Messtechnik GmbH 2012

Ordering No. L-780e_0
Printed in Germany