

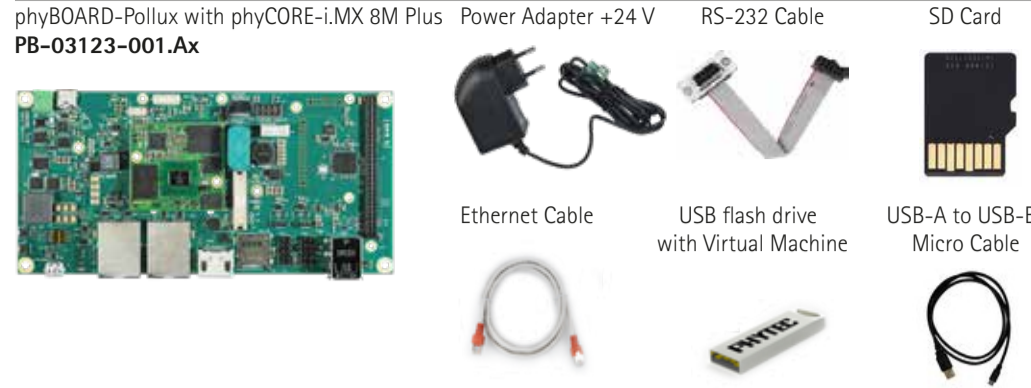
phyCORE[®]-i.MX 8M Plus phyBOARD[®]-Pollux / SBC Kit

Get your phyCORE-i.MX 8M Plus powered up and connected in just a few simple steps.

1 | PREPARING THE HARDWARE

1. Have the included connection cables at hand: You need a USB-A to USB-B micro cable, a standard Ethernet cable and the power adapter (+24 V / 1 A).
2. Connect the USB cable to your host PC and the Debug FTDI (X1).
3. Set the Boot Mode DIP Switch (S3) to SD Card (Figure 1).
4. Insert the USB drive into the host PC.
5. Power up the **phyCORE-i.MX 8M Plus**.
Connect the power adapter (+24 V DC) to the power supply connector (X23).
6. Turn your power supply on.

Kit Contents



Optional Accessories

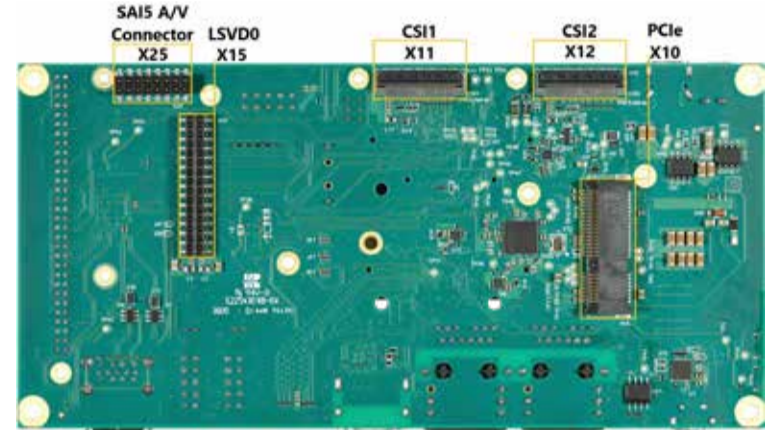
- Display Kit 10" LVDS Direct Connection **KLCD-AC168.A0**
- Display Kit 7" LVDS A/V Adapter Connection **KPEB-AV-10**
- Sterling WIFI-Bluetooth Expansion Board (2.4GHz/5GHz) **PEB-WLBT-05**
- Heatspreader **XK048**
- Heatsink **XK049**

Figure 1: Boot Mode DIP Switch (S3)
SD Card Setting

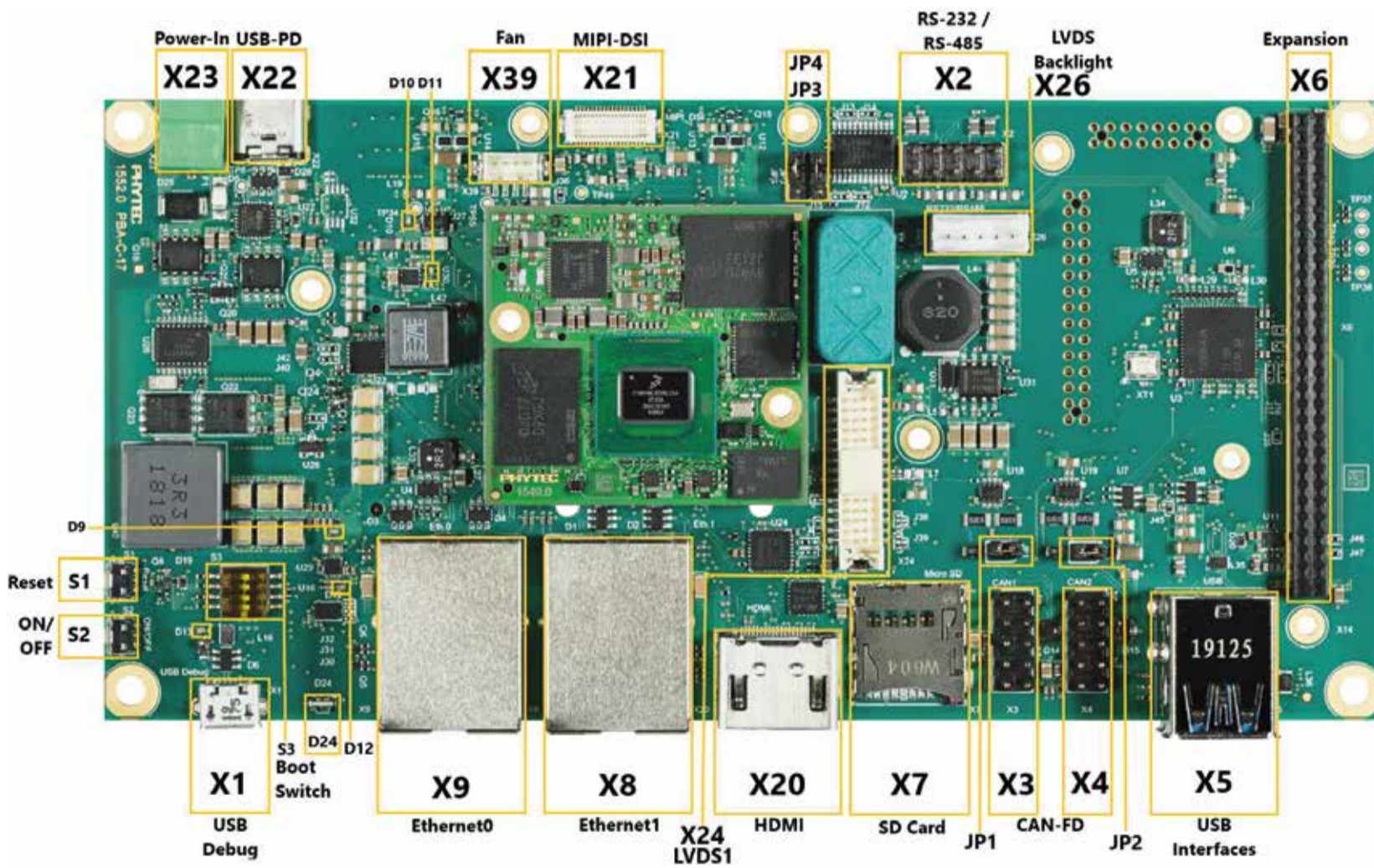


phyBOARD[®]-Pollux
with phyCORE[®]-i.MX 8M Plus

FRONT



BACK



PHYTEC

Germany
PHYTEC Messtechnik GmbH
D-55129 Mainz
t +49 6131 9221-32
f +49 6131 9221-33
www.phytec.de
www.phytec.eu

France
PHYTEC France SARL
F-72140 Sillé le Guillaume
t +33 2 43 29 22 33
f +33 2 43 29 22 34
www.phytec.fr

USA
PHYTEC America LLC
Bainbridge Island, WA 98110
t +1 206 780 9047
f +1 206 780 9135
www.phytec.com

India
PHYTEC Embedded Pvt. Ltd.
Bangalore
560102
t +91 80 40867046
www.phytec.in

China
PHYTEC Information Technology Co. Ltd.
Nanshan District
518052 Shenzhen
t +86 755 6180 2110
www.phytec.cn

L-1025c-A4

Quick Start Guide

2 | PREPARING AND STARTING THE VIRTUAL MACHINE

To follow this QuickStart and the descriptions in the Development Environment Guide you need our compressed **phyCORE-i.MX 8M Plus** virtual machine hard disc image (SO-558vl.zip). The hard disk image includes all software installations and configurations (e.g. Toolchain, Eclipse, Qt Creator) necessary for a successful start-up of the **phyCORE-i.MX 8M Plus**. The virtual machine hard disk image (.vmdk) is suitable for most virtualization software and can be mounted to an appropriate virtual machine (tested with VMware Player and Virtualbox).

1. Insert the SD Card into the Pollux (X7). Insert the USB stick into your PC.
2. Unzip the folder on the USB stick to find the ova and checksum files.
3. Open your visualization management tool and import the ova file to your visualization management tool.


We recommend having two network adapters available on the host PC. One for a peer-to-peer connection to the target and one with access to the internet. Otherwise, be advised that you will need to swap Ethernet connections multiple times in order to access documentation and sources.

4. Start the virtual machine with our hard disk image. You will see the modified Ubuntu desktop (A). For further use of the virtual machine the pre-created login data is:
username: phym – password: phytec

Now you are ready to connect your PC with the phyCORE-i.MX 8M Plus.

3 | GETTING CONNECTED – SERIAL CONNECTION


1. Connect one end of the USB cable to the FTDI Debug port (X1).
2. Connect the other end to the first USB interface of your PC.
3. Click the **Microcom_ttyS0 icon (B)** on the Ubuntu desktop (for direct serial interface connection) or click the **Microcom_ttyUSB0 icon** if you are using a USB to DB-9 dongle.

 By default every input and output is transmitted over the serial connection with a baud rate of 115200.

4. Click the reset button **S1** on the board (or power cycle the board).

A serial console has been started within your Live System.

You should see a boot message and the login-prompt on this console (C). Congratulations!

 If you do not see any output in the Microcom window, check the serial connection between the target and your host. By default Microcom uses /dev/ttyS0. If you want to use another port you can click on the Microcom Icon at your desktop with your right mouse button and select Properties. A window opens in which you can change the properties of the Microcom icon. Click in the Command field and search for „-p/dev/ttyS0“. Change it for example to /dev/ttyS1 and so on if you have more than one serial port. If the Microcom window does not open, one reason could be a lock-file which was created when Microcom was not correctly terminated. Delete this file by opening a terminal and type: `sudo rm /var/lock/LCK.*`

5. Use "root" as the log-in-name on the serial console (and press enter).
6. As a good example (and helpful for understanding the next step) enter `ifconfig`. You will get information about the configuration of the Ethernet interface of the target (D).

ETHERNET CONNECTION


We recommend disconnecting your host-PC from any other network, because a peer to-peer connection from your PC to the phyCORE-i.MX 8M Mini Plus will be established.

1. Connect your preferred Ethernet interface on your PC with RJ45 connector **X8 (ETH1)** on the **phyCORE-i.MX 8M Plus** using the included Ethernet cable.
2. Configure the IP-settings on your host platform in Ubuntu:
 - In the **Unity-panel** (left side of your desktop) click on the **Ubuntu logo** (topmost icon).
 - The Ubuntu dashboard will open; enter **System Settings** in the search field (you will see the corresponding icon showing up already during typing of the search string).
 - Open **System Settings** and click on the **Network** icon.
 - Select the physical interface to which you have connected the Ethernet cable (if you have more than one network in the list) and click on **Options**.
 - Select the **IPv4Settings (E)** tab and choose **Manual (F)** in the **Method** drop down box.
 - Click **Add (G)** and enter the IP address **192.168.3.10 (H)** and **255.255.255.0** as subnet mask **(I)** and **192.168.3.10** as gateway **(J)**.
 - Last, click on **Save (K)** to save these connection settings and close the windows.

You are now ready to test the Ethernet network connection.

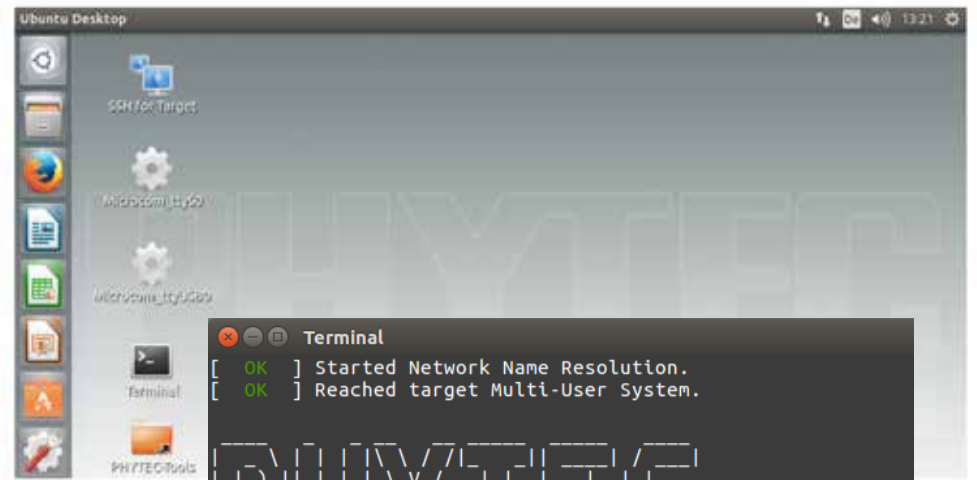
3. Click on the **SSH for Target icon (L)** on your desktop. A console window will open and you will see an authentication question. Type **yes** and press Enter.

You are now connected to the target (M). Congratulations!

 If you do not see the user login, check the Ethernet connection between the target and the host. Be sure that you have configured the network adapter in the virtual machine configuration correct.

YOUR POSSIBLE NEXT STEPS

- Please read our Development Environment Guide on the desktop of the VM to learn how to use the advantages of the virtual machine image.
- Please check our page <https://www.phytec.de/p/som/phycore-imx-8m-plus> for the latest documentation, downloads & FAQs.
- Please feel free to contact our support team if you have any questions about getting the board up and running.

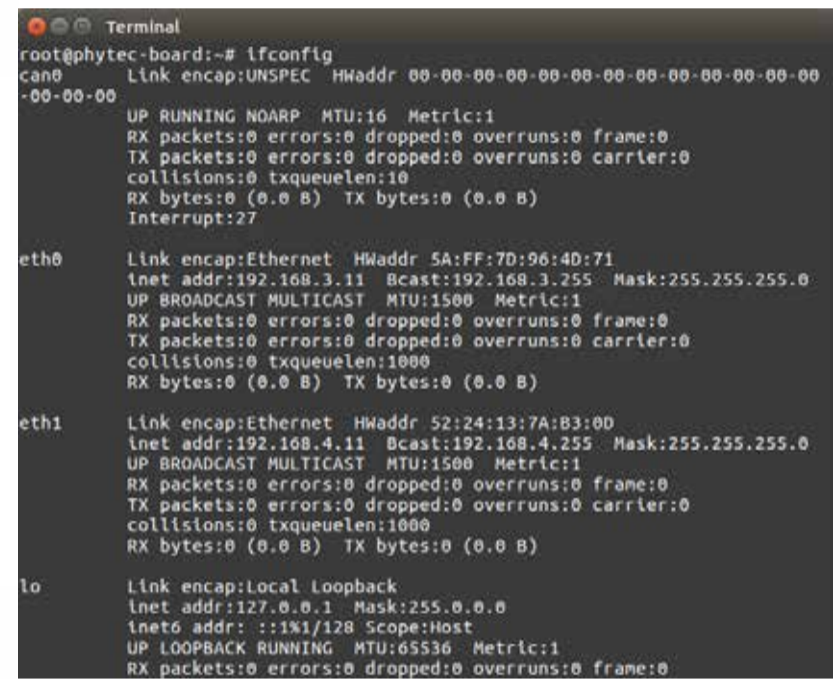


(A)

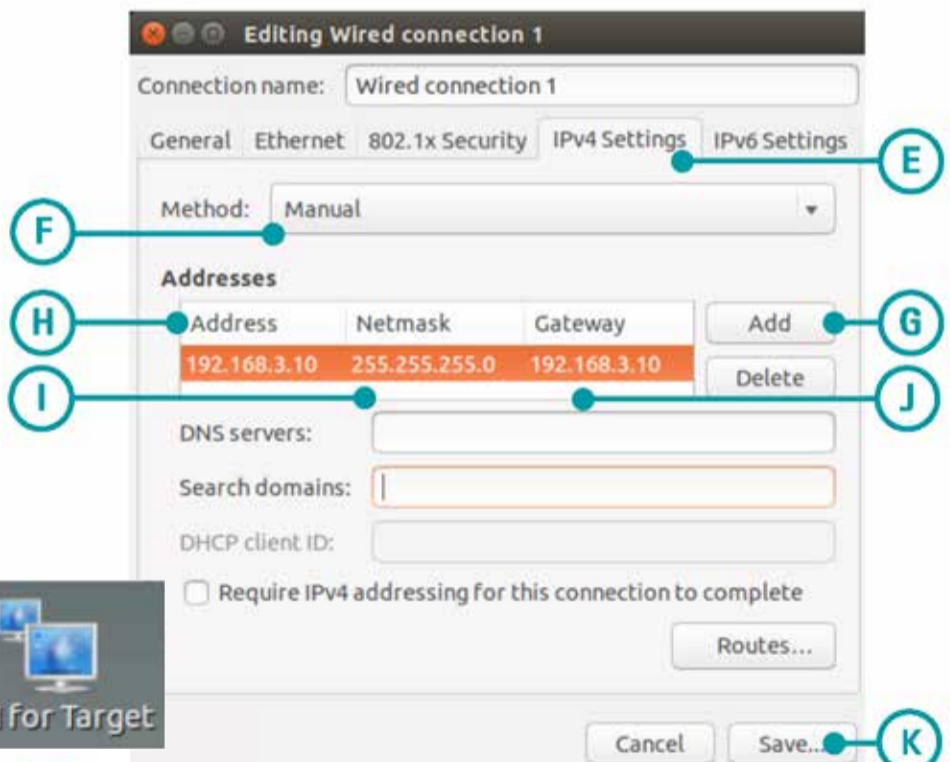
(C)



(B)



(D)



(L)

(M)

