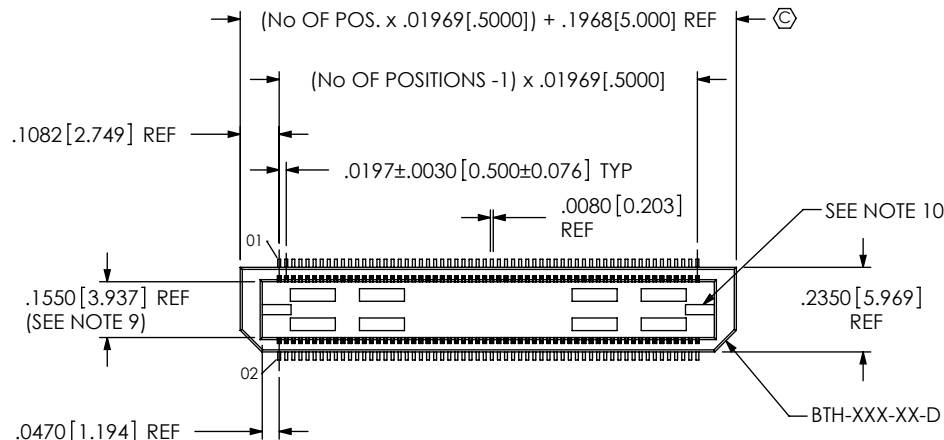


DO NOT SCALE FROM THIS PRINT



BTH-XXX-XX-X-D-XX

No OF POSITIONS
030, **050, 060, 090,
*120, *150
(PER ROW)
LEAD STYLE -02 ONLY: 030 - 180
MULTIPLES OF 10

*SEE NOTE 7

LEAD STYLE

-01: .1680[4.267]
-02: .2861[7.264]
(030 - 180 POSITIONS AVAILABLE)
-03: .4042[10.267]
-04: .6000[15.240]
-05: .7180[18.237]
-06: .8360[21.234]
-09: .5224[13.269]

*** = 50 POS. ONLY AVAILABLE FOR
-01 AND -02 LEAD STYLE
(REF ASP-65267-02), NOT
TOOLED FOR -03 LEAD STYLE

OPTION

-A: ALIGNMENT PINS
(USE BTH-XXX-XX-D-A FOR
STYLES -01 & -02)(FOR STYLES
-03 THRU -09, SEE TABLE 4 &
FIG 4, SHEET 3)

-LC: LOCKING CLIPS (SEE NOTE 8)"
(USE LC-08-TM-01)

-K: POLYIMIDE FILM
(USE K-DOT-.276-.375-.005, SEE FIG 2)
(AVAILABLE ON STYLES -01
THRU -04 & -09 ONLY)

-TR: TAPE & REEL (120 POS MAX)
[N/A ON -05 THRU -06]

ROW SPECIFICATION

-D: DOUBLE (USE BTH-XXX-XX-D
& BTHH-XXX-XX-D)

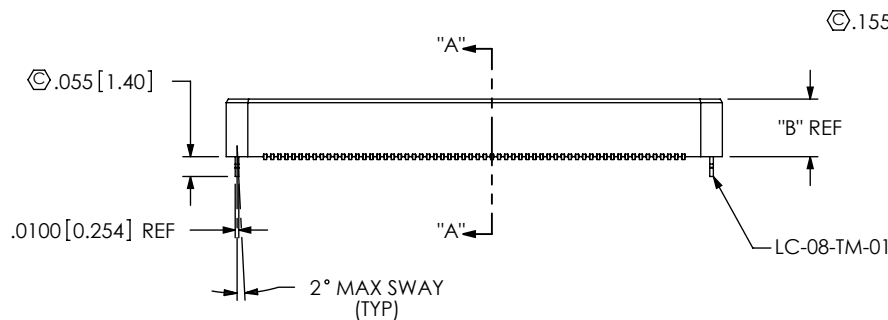
PLATING SPECIFICATION

-F: 3µ" SELECTIVE GOLD IN CONTACT
AREA, MATTE TIN ON TAIL

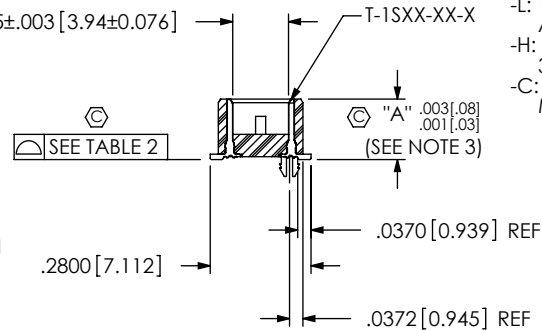
-L: 10µ" SELECTIVE GOLD IN CONTACT
AREA, MATTE TIN ON TAIL

-H: 30µ" GOLD IN CONTACT AREA,
3µ" GOLD ON TAIL

-C: 50µ" GOLD IN CONTACT AREA,
MATTE TIN ON TAIL



-LC: LOCKING CLIP OPTION SHOWN



SECTION "A"- "A"

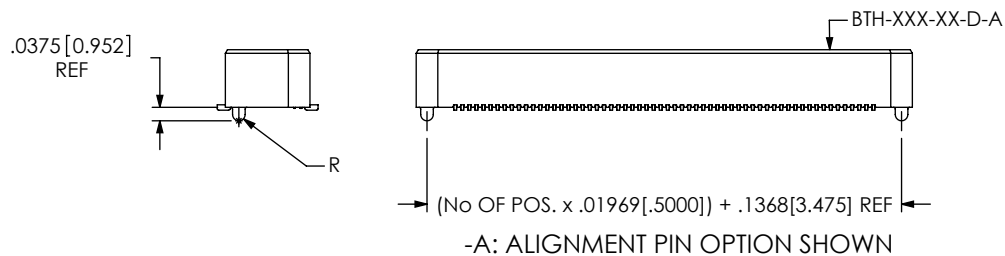


TABLE 2

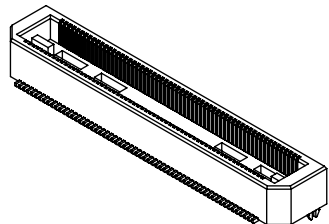
NO. OF POSITIONS	COPLANARITY
-030 THRU -090	.004[.10]
-120 THRU -150	.006[.15]

TABLE 1

STYLE	BODY			TERMINAL	MATED HEIGHT WITH BSH
	"A"	"B"	TERMINAL		
-01	.1680[4.267]	.1600[4.064]	BTH-XXX-01-D(-A)	T-1S39-01-X	.1969[5.001] REF
-02	.2861[7.267]	.2781[7.064]	BTH-XXX-02-D(-A)	T-1S59-02-X	.3150[8.001] REF

NOTES:

- ⊕ REPRESENTS A CRITICAL DIMENSION.
- MINIMUM PUSHOUT FORCE: 6 OZ. FOR STYLES -01 & -02
8 OZ. FOR STYLES -03 THRU -09
- MAXIMUM VARIANCE: .002[.05].
- LEAD STYLES -03 THRU -09: TOP BODY (BTH)
CANNOT HAVE -A OPTION.
- L PLATING CAN BE SUBSTITUTED FOR -F PLATING.
- NOTE DELETED.
- FOR NEW APPLICATIONS REQUIRING THESE POSITIONS, PLEASE
CONTACT SAMTEC INTERCONNECT PROCESSING GROUP.
- DUE TO THE HIGH AMOUNT OF INSERTION FORCE NEEDED, THE
-LC OPTION IS NOT COMPATIBLE WITH AUTO PLACEMENT.
SAMTEC RECOMMENDS MANUAL PLACEMENT FOR ALL
ASSEMBLIES WITH THE -LC OPTION.
- PIN CAN EXTEND PAST THE WALL: .003 [0.08].
- FEATURE PRESENT ONLY ON -01 LEAD STYLE.



UNLESS OTHERWISE SPECIFIED,
DIMENSIONS ARE IN INCHES.
TOLERANCES ARE:
DECIMALS ANGLES
.XX: ±.01 [3]
.XXX: ±.005 [13]
.XXXX: ±.0020 [051]

PROPRIETARY NOTE
THIS DOCUMENT CONTAINS INFORMATION
CONFIDENTIAL AND PROPRIETARY TO
SAMTEC, INC. AND SHALL NOT BE REPRODUCED
OR TRANSFERRED TO OTHER DOCUMENTS OR
DISCLOSED TO OTHERS OR USED FOR ANY
PURPOSE OTHER THAN THAT WHICH IT WAS
OBTAINED WITHOUT THE EXPRESSED WRITTEN
CONSENT OF SAMTEC, INC.



520 PARK EAST BLVD, NEW ALBANY, IN 47150
PHONE: 812-944-6733 FAX: 812-948-5047
e-Mail: info@SAMTEC.com code: 53322

MATERIAL: INSULATOR: BLACK LCP FLAMMABILITY RATING: UL 94V-0 TERMINAL: PHOS BRONZE	DO NOT SCALE DRAWING SHEET SCALE: 1:0.533338 DESCRIPTION: .5mm DOUBLE ROW TERMINAL ASSEMBLY	DWG. NO. BTH-XXX-XX-X-D-XX
BY: DEAN P 5/28/1999		SHEET 1 OF 3

FIG 2
-K: POLYIMIDE FILM PAD OPTION

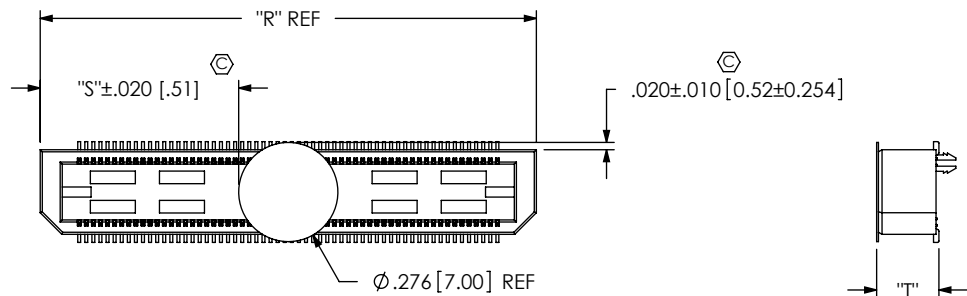


TABLE 3	
STYLE	"T"
-01	.173[4.39]
-02	.291[7.39]
-03	.409[10.39]
-04	.605[15.37]
-09	.527[13.39]

NOTE: "R" = (No OF POSITIONS x .01969[.5000]) + .1968[5.000]
 "S" = ((("R" - .276[7.01]) / 2) ± .020[.51])

PACKAGING VIEW (PARTS TO HAVE POSITION #01 LOADED IN SAME DIRECTION AS ARROW)			
[STYLES -01 & -02]	[STYLES -03, -04, & -09]	[STYLE -05]	[STYLE -06]
TUBE: PT-1-24-01-78 PLUG: TP-03	TUBE: PT-1-24-01-98 PLUG: TP-26	TUBE: PT-1-24-02-105 PLUG: TP-26	TUBE: PT-1-24-01-105 PLUG: TP-26

F:\dwg\MISC\Mktg\BTH-XXX-XX-X-D-XX-MKT.SLDDRW

PROPRIETARY NOTE
 THIS DOCUMENT CONTAINS INFORMATION CONFIDENTIAL AND PROPRIETARY TO SAMTEC, INC. AND SHALL NOT BE REPRODUCED OR TRANSFERRED TO OTHER DOCUMENTS OR DISCLOSED TO OTHERS OR USED FOR ANY PURPOSE OTHER THAN THAT WHICH IT WAS OBTAINED WITHOUT THE EXPRESSED WRITTEN CONSENT OF SAMTEC, INC.

DO NOT SCALE DRAWING

SHEET SCALE: 1.875:1



520 PARK EAST BLVD, NEW ALBANY, IN 47150
 PHONE: 812-944-6733 FAX: 812-948-5047
 e-Mail: info@SAMTEC.com code: 55322

DESCRIPTION:
 .5mm DOUBLE ROW TERMINAL ASSEMBLY

DWG. NO. **BTH-XXX-XX-X-D-XX**

BY: DEAN P 5/28/1999 SHEET 2 OF 3

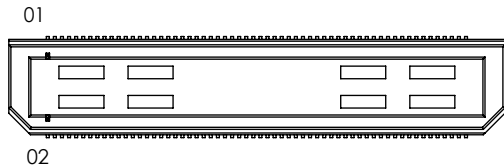


TABLE 4							
STYLE	SEE FIGURE	"C" OVERALL HEIGHT	TERMINAL	TOP BODY (SEE NOTE 4)	BOTTOM SPACER BODY (-LC OR NONE)	BOTTOM SPACER BODY (-A)	MATED HEIGHT WITH BSH-01
-03	3	.4042 [10.267]	T-1S60-03-X	BTH-XXX-02-D	BTHH-XXX-01-D	BTHH-XXX-01-D-A	.433 [11.00] REF
-04	3	.6000 [15.240]	T-1S60-04-X	BTH-XXX-02-D	BTHH-XXX-01-D	BTHH-XXX-01-D-A	.630 [16.00] REF
-05	4	.7180 [18.237]	T-1S60-05-X	BTH-XXX-02-D	BTHH-XXX-03-D	BTHH-XXX-03-D-A	.748 [19.00] REF
-06	4	.8360 [21.234]	T-1S60-06-X	BTH-XXX-02-D	BTHH-XXX-03-D	BTHH-XXX-03-D-A	.866 [22.00] REF
-09	3	.5224 [13.269]	T-1S60-09-X	BTH-XXX-02-D	BTHH-XXX-01-D	BTHH-XXX-01-D-A	.551 [14.00] REF

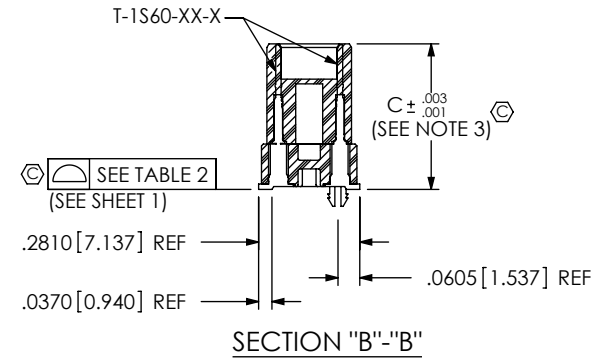
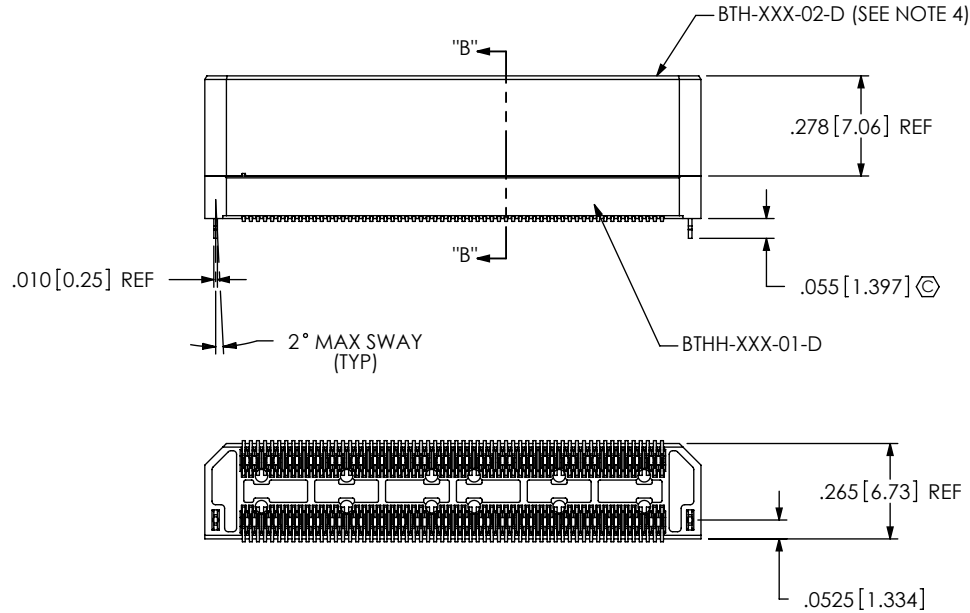


FIG 3
BTH-060-03-X-D-LC SHOWN
(STYLES -03, -04, & -09)
(DIFFERENT AS SHOWN, OTHERWISE SAME AS FIG 1)

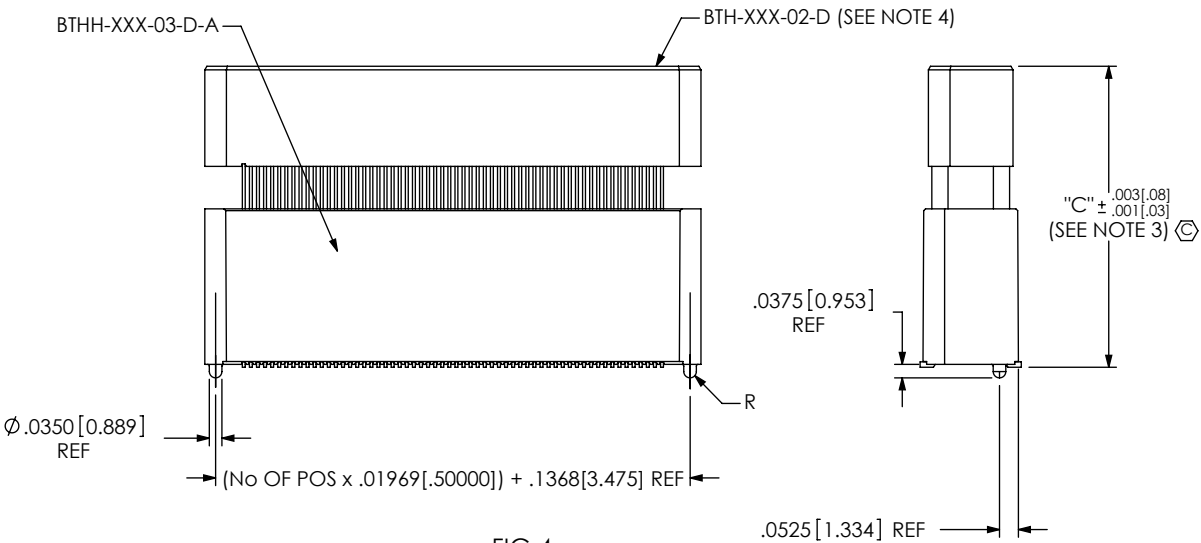


FIG 4
-A: ALIGNMENT PIN OPTION
BTH-060-06-X-D-A SHOWN
(STYLES -05 & -06)
(DIFFERENT AS SHOWN, OTHERWISE SAME AS FIG 1)

F:\dwg\MISC\Mktg\BTH-XXX-XX-X-D-XX-MKT.SLDDRW

PROPRIETARY NOTE
THIS DOCUMENT CONTAINS INFORMATION
CONFIDENTIAL AND PROPRIETARY TO
SAMTEC, INC. AND SHALL NOT BE REPRODUCED
OR TRANSFERRED TO OTHER DOCUMENTS OR
DISCLOSED TO OTHERS OR USED FOR ANY
PURPOSE OTHER THAN THAT WHICH IT WAS
OBTAINED WITHOUT THE EXPRESSED WRITTEN
CONSENT OF SAMTEC, INC.

DO NOT SCALE DRAWING
SHEET SCALE: 1:0.533333



520 PARK EAST BLVD, NEW ALBANY, IN 47150
PHONE: 812-944-6733 FAX: 812-948-5047
e-Mail: info@SAMTEC.com code: 55322

DESCRIPTION:
.5mm DOUBLE ROW TERMINAL ASSEMBLY
DWG. NO. BTH-XXX-XX-X-D-XX
BY: DEAN P 5/28/1999 SHEET 3 OF 3